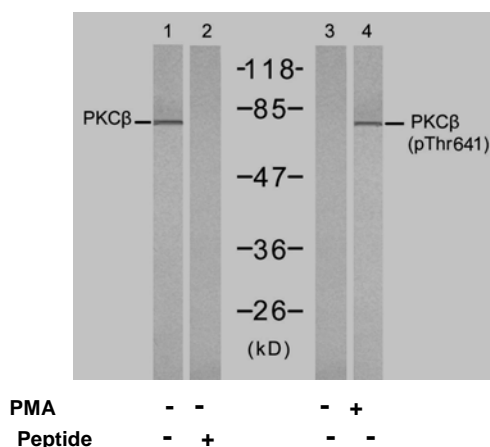




11 Park Drive, Suite 12
Boston, MA 02215

Rabbit anti PKC β (Ab-641)

- Catalog Number:** AP21184
Amount: 100 μ l (for 10 Western Blotting)
Swiss-Prot No. : P05771
Form of Antibody: Rabbit IgG in phosphate buffered saline (without Mg²⁺ and Ca²⁺), pH 7.4, 150mM NaCl, 0.02% sodium azide and 50% glycerol.
Storage/Stability: Store at -20°C/1 year
Immunogen: The antiserum was produced against synthesized non-phosphopeptide derived from human PKC β around the phosphorylation site of threonine 641 (E-L-T^P-P-T).
Purification: The antibody was affinity-purified from rabbit antiserum by affinity-chromatography using epitope-specific immunogen.
Specificity/Sensitivity: PKC β (Ab-641) antibody detects endogenous levels of total PKC β protein.
Reactivity: Human, Mouse, Rat
Applications: WB: 1:1000
References: Zhang Y, et al. (2006) Mol Cell Biol ; 26: 6748-6761
Castoria G, et al. (2004) Mol Cell Biol ; 24: 7643-7653
Marcil J, et al. (1999) Biochem J ; 337:185-192
Bornancin F, et al. (1996) Curr Biol ; 6:1114-1123.



Western blot analysis of extracts from K562 cells, untreated or treated with PMA (1ng/ml, 10min), using PKC β (Ab-641) antibody (AP21184, Lane 1 and 2) and PKC β (phospho-Thr641) antibody (pAP11172, Lane 3 and 4).

For Research Use Only

Contact & Ordering Information: Angio-Proteomie, 11 Park Drive, Suite 12, Boston, MA 02215, USA. Fax: (480) 247-4337, angioproteomie@gmail.com