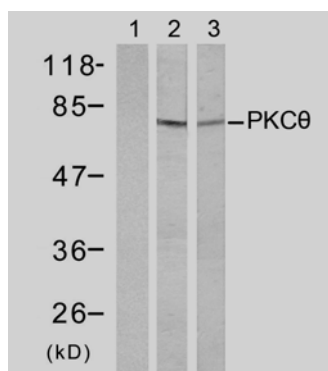




11 Park Drive, Suite 12
Boston, MA 02215

Rabbit anti PKC θ (Ab-695)

- Catalog Number:** AP21185
Amount: 100 μ l (For 10 Western Blotting)
Swiss-Prot No. : Q04759
Form of Antibody: Rabbit IgG in phosphate buffered saline (without Mg²⁺ and Ca²⁺), pH 7.4, 150mM NaCl, 0.02% sodium azide and 50% glycerol.
Storage/Stability: Store at -20°C/1 year
Immunogen: The antiserum was produced against synthesized non-phosphopeptide derived from human PKC θ around the phosphorylation site of serine 695 (N-F-S^P-F-M).
Purification: The antibody was affinity-purified from rabbit antiserum by affinity-chromatography using epitope-specific immunogen.
Specificity/Sensitivity: PKC θ (Ab-695) antibody detects endogenous levels of total PKC θ protein.
Reactivity: Human, Mouse, Rat
Applications: WB: 1:1000
References: Xu ZB, et al.(2004) J Biol Chem 279:50401-50409
Thebault S, et al. (2004) Mol Immunol 40: 931-942



Anisomycin	+	+	+
Peptide	+	-	-

Western blot analysis of extract from HT-29 (Lane 1 and 2) and K562 cells (Lane 3) treated with Anisomycin (1mM, 30min), using PKC θ (Ab-695) antibody (AP21185).

For Research Use Only

Contact & Ordering Information: Angio-Proteomie, 11 Park Drive, Suite 12, Boston, MA 02215, USA. Fax: (480) 247-4337, angioproteomie@gmail.com