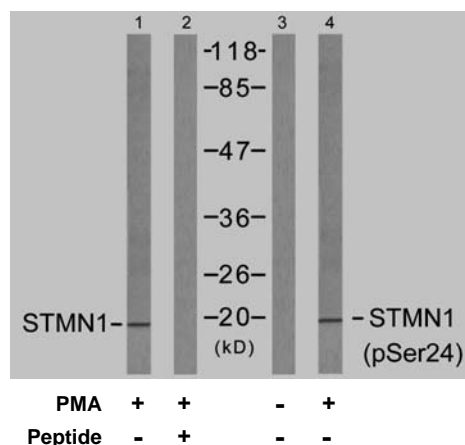


Rabbit anti Stathmin 1 (Ab-24)

- Catalog Number:** AP21217
Amount: 100µl (for 10 Western Blotting)
Swiss-Prot No. : P16949
Form of Antibody: Rabbit IgG in phosphate buffered saline (without Mg²⁺ and Ca²⁺), pH 7.4, 150mM NaCl, 0.02% sodium azide and 50% glycerol.
Storage/Stability: Store at -20°C/1 year
Immunogen: The antiserum was produced against synthesized non-phosphopeptide derived from human Stathmin 1 around the phosphorylation site of serine 24 (I-L-S^P-P-R).
Purification: The antibody was affinity-purified from rabbit antiserum by affinity-chromatography using epitope-specific immunogen.
Specificity/Sensitivity: Stathmin 1 (Ab-24) antibody detects endogenous levels of total Stathmin 1 protein.
Reactivity: Human, Mouse, Rat
Applications: WB: 1:1000
References: Boehm M, et al. (2002) EMBO J 21(13): 3390-3401.
Vadlamudi RK, et al. (2005) Mol Cell Biol 25(9): 3726-3736.
Zilfou JT, et al. (2001) Mol Cell Biol 21(12): 3974-3985.
Biernat J, et al. (2002) Mol Biol Cell 13(11): 4013-4028.



Western blot analysis of extracts from Jurkat cells untreated or treated with PMA (1ng/ml, 15min), using Stathmin 1 (Ab-24) antibody (AP21217, Line 1 and 2) and Stathmin 1 (phospho-Ser24) antibody (pAP11224, Line 3 and 4).

For Research Use Only

Contact & Ordering Information: Angio-Proteomie, 11 Park Drive, Suite 12, Boston, MA 02215, USA. Fax: (480) 247-4337, angioproteomie@gmail.com