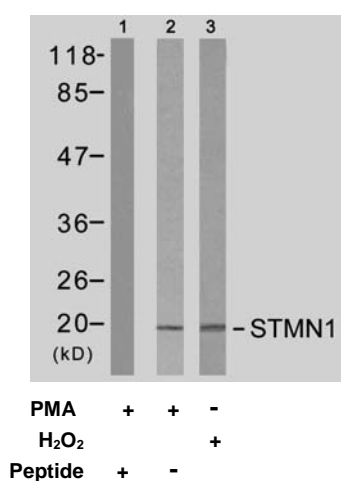


Rabbit anti Stathmin 1 (Ab-15)

- Catalog Number:** AP21227
- Amount:** 100µl (For 10 Western Blotting)
- Swiss-Prot No. :** P16949
- Form of Antibody:** Rabbit IgG in phosphate buffered saline (without Mg^{2+} and Ca^{2+}), pH 7.4, 150mM NaCl, 0.02% sodium azide and 50% glycerol.
- Storage/Stability:** Store at -20°C/1 year
- Immunogen:** The antiserum was produced against synthesized non-phosphopeptide derived from human Stathmin 1 around the phosphorylation site of serine 15 (R-A-S^P-G-Q).
- Purification:** The antibody was affinity-purified from rabbit antiserum by affinity-chromatography using epitope-specific immunogen.
- Specificity/Sensitivity:** Stathmin 1 (Ab-15) antibody detects endogenous levels of total Stathmin 1 protein.
- Reactivity:** Human, Mouse, Rat
- Applications:** WB: 1:1000
- References:** Larsson N, et al. (1999) Mol Cell Biol; 19(3): 2242-2250
Küntziger T, et al. (2001) Mol Biol Cell; 12(2): 437-448
Vadlamudi RK, et al. (2005) Mol Cell Biol; 25(9): 3726-3736
Vázquez-Boland JA, et al. (2001) Clin Microbiol Rev; 14(3): 584-640
Howell B, et al. (1999) Mol Biol Cell; 10(1): 105-118



Western blot analysis of extracts from Jurkat cells untreated or treated with PMA (1ng/ml, 5min) or H₂O₂, using Stathmin 1 (Ab-15) antibody (AP21227).

For Research Use Only

Contact & Ordering Information: Angio-Proteomie, 11 Park Drive, Suite 12, Boston, MA 02215, USA. Fax: (480) 247-4337, angioproteomie@gmail.com