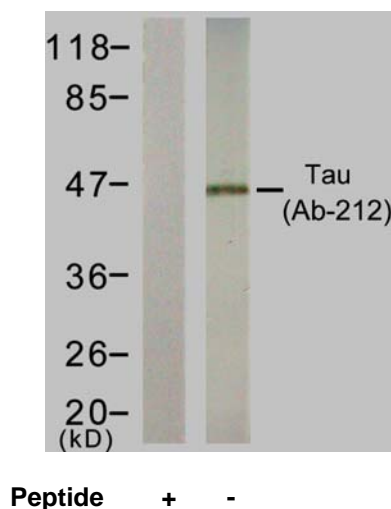


Rabbit anti Tau (Ab-212)

- Catalog Number:** AP21249
Amount: 100µl (For 10 Western Blotting)
Form of Antibody: Rabbit IgG in phosphate buffered saline (without Mg^{2+} and Ca^{2+}), pH 7.4, 150mM NaCl, 0.02% sodium azide and 50% glycerol.
Storage/Stability: Store at -20°C/1 year
Immunogen: The antiserum was produced against synthesized non-phosphopeptide derived from human Tau around the phosphorylation site of threonine 212 (S-R-T^P-P-S).
Purification: The antibody was affinity-purified from rabbit antiserum by affinity-chromatography using epitope-specific immunogen.
Specificity/Sensitivity: Tau (Ab-212) antibody detects endogenous levels of total Tau protein.
Reactivity: Human, Mouse, Rat
Applications: WB: 1:1000
Swiss-Prot No. : P10636
References: Gong CX, et al. (2006) *J Biomed Biotechnol.* 2006: 31825
Zheng-Fischhöfer Q, et al. (1998) *Eur J Biochem.* 252:542–552
Illenberger S, et al. (1998) *Mol Biol Cell.* Jun; 9(6): 1495-1512



Western blot analysis of extract from rat hippocampus tissue, using Tau (Ab-212) antibody (AP21249).

For Research Use Only

Contact & Ordering Information: Angio-Proteomie, 11 Park Drive, Suite 12, Boston, MA 02215, USA. Fax: (480) 247-4337, angioproteomie@gmail.com