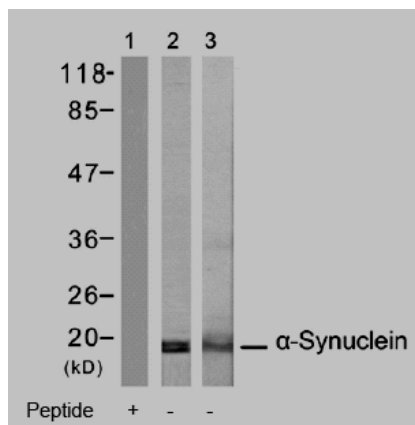


Rabbit anti α -Synuclein (Ab-136)

- Catalog Number:** AP21278
Amount: 100 μ l (For 10 Western Blotting)
Form of Antibody: Rabbit IgG in phosphate buffered saline (without Mg²⁺ and Ca²⁺), pH 7.4, 150mM NaCl, 0.02% sodium azide and 50% glycerol.
Storage/Stability: Store at -20°C/1 year
Immunogen: The antiserum was produced against synthesized non-phosphopeptide derived from human α -Synuclein around the phosphorylation site of tyrosine 136 (Q-D-Y^P-E-P).
Purification: The antibody was affinity-purified from rabbit antiserum by affinity-chromatography using epitope-specific immunogen.
Specificity/Sensitivity: α -Synuclein (Ab-136) antibody detects endogenous levels of total α -Synuclein protein.
Reactivity: Mouse, Rat
Applications: WB: 1:1000
Swiss-Prot No. : P37840
References: Takahashi T, et al. J Biol Chem 2003 Oct 24; 278(43): 42225-33
Ahn BH, et al. J Biol Chem 2002 Apr 05; 277(14): 12334-42
Negro A, et al. FASEB J 2002 Feb; 16(2): 210-2
Goldberg, et al. Nat. Cell Biol. 2000; 2, 115-119.



Western blot analysis of extract from rat brain tissue (lane 1, 2) or mouse brain tissue (lane 3), using α -Synuclein (Ab-136) antibody (AP21278).

For Research Use Only

Contact & Ordering Information: Angio-Proteomie, 11 Park Drive, Suite 12, Boston, MA 02215, USA. Fax: (480) 247-4337, angioproteomie@gmail.com