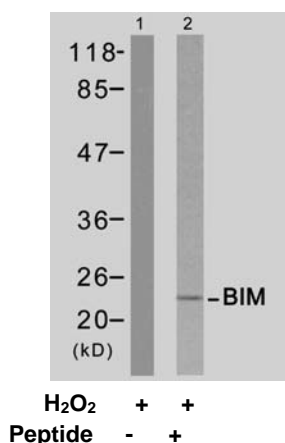




11 Park Drive, Suite 12
Boston, MA 02215

Rabbit anti BIM (Ab-65)

- Catalog Number:** AP21280
Amount: 100µl (For 10 Western Blotting)
Swiss-Prot No. : O43521
Form of Antibody: Rabbit IgG in phosphate buffered saline (without Mg^{2+} and Ca^{2+}), pH 7.4, 150mM NaCl, 0.02% sodium azide and 50% glycerol.
Storage/Stability: Store at -20°C/1 year
Immunogen: The antiserum was produced against synthesized non-phosphopeptide derived from mouse BIM around the phosphorylation site of serine 65 (P-A-S^P-P-G).
Purification: The antibody was affinity-purified from rabbit antiserum by affinity-chromatography using epitope-specific immunogen.
Specificity/Sensitivity: BIM (Ab-65) antibody detects endogenous levels of total BIM protein.
Reactivity: Human, Mouse, Rat
Applications: WB: 1:1000
References: Fukazawa H, et al. (2004) Mol Cancer Ther ; 3(10): 1281-1288
Luciano F, et al. (2003) Oncogene ; 22(43): 6785-6793



Western blot analysis of extract from Jurkat cells untreated or treated with H₂O₂, using BIM (Ab-65) antibody (AP21280).

For Research Use Only

Contact & Ordering Information: Angio-Proteomie, 11 Park Drive, Suite 12, Boston, MA 02215, USA. Fax: (480) 247-4337, angioproteomie@gmail.com