

Rat Brain Microvascular Endothelial Cells
ORDER INFORMATION

Name of Cells: Rat Brain Microvascular Endothelial Cells (**RBMVECs**)
Catalogue Number: **cAP-r0002**
Product Format: Frozen Vial
Cell Number: > 5 x 10⁵ cells/vial

General Information:

RBMVECs (cAP-r0002) are isolated from brain tissues of adult SD rats. The cells are shipped in a frozen vial (the cells are provided @ passage 3). Endothelial Growth Medium (REGM, cAP-02) is recommended for the expansion of RAECs and these cells can be propagated to 8 passage and beyond without losing their morphologic and phenotypic characteristics when cultured [following the detailed protocol described below](#).

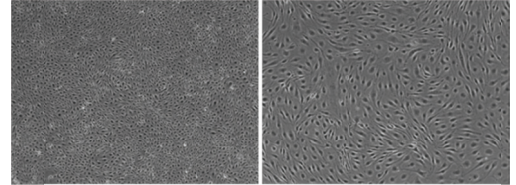
Characterization of the cells

PECAM1: >95% positive by immunofluorescence
VE-Cadherin: >95% positive by immunofluorescence

RBMVECs are tested negative for mycoplasma.

Product Use: RBMVECs are for Research Use Only.

Shipping: Frozen vials with dry ice package



cAP-r0002 Rat Brain Microvascular Endothelial cells (SD Rats, Adults)

Handling of Arriving Cells

When you receive the cells in a frozen vial, you can transfer the vial of cells into a -80°C freezer for short period storage or a liquid nitrogen tank for long term storage. Thaw the cells in a 37°C water bath, and then transfer the cells in a T25 flask pre-coated with Quick coating solution (cAP-01) as described in details in Subculture Protocol.

Note: For certain endothelial cells, fibronectin (cAP-42) coated culture wares are essential (check cAP-42 for detailed protocols).

Subculture Protocol

- A) Pre-coating of T25 flasks: Add 2ml of Quick Coating Solution (**cAP-01**) into one T25 flask and make sure whole surface of the flask is covered with the coating solution. Five minutes later, dispose excessive Quick Coating Solution by aspiration and the flask is ready to be used (no need for overnight incubation when using Quick Coating Solution). Other extracellular matrix can be used including gelatin, collagen, and fibronectin and you are advised to test the conditions for using those materials in advance.
- B) Rinse the cells in T25 flask with 5ml HBSS (**Room Temperature, RT**) twice.
- C) Add 2ml of Trypsin/EDTA (**RT**) (cAP-23) into one T25 flask (make sure the whole surface of the T25 flask is covered with Trypsin/EDTA), and gently dispose the excessive Trypsin/EDTA solution **within 20 seconds** with aspiration.
- D) Leave the T25 flask with the cells at **RT** for 1 minute (the cells usually will detach from the surface within 1-2 minutes). You can monitor the cells under microscope and when most of cells become rounded up, hit the flask against the bench surface, and the cells will move on the surface of the flask when monitoring under microscope.
- E) Add 5ml Trypsin Neutralization Buffer and spin the cells down with 800g for 5 minutes.
- F) Re-suspend the cell pellet with 10 - 15ml of EGM full medium and the cell suspension is transferred directly into 2 or 4 pre-coated T25 flasks (5ml each, and the cells are sub-cultured at 1:2 to 1: 3 ratios)
- G) Change medium every 2-3 days and cells usually become confluent within 7 days.
- H) If you need prepare quiescent cells, when cells are almost confluent, replace EGM full medium with Endothelial Basal Medium (EBM, cAP-03) containing 0.5% FBS about 8-12 hours before your experiments.

Related Products:

Quick Coating Solution	cAP-01	240ml	Angio-Proteomie
Endothelial Growth Medium	cAP-02	500ml	Angio-Proteomie
Endothelial Basal Medium	cAP-03	500ml	Angio-Proteomie
HBSS w/o Ca ²⁺ , Mg ²⁺	cAP-11	100ml	Angio-Proteomie
Cell Freezing Solution (FBS)	cAP-22	50ml	Angio-Proteomie
Cell Freezing Solution (Non-FBS)	cAP-22B	50ml	Angio-Proteomie
Trypsin/EDTA Solution	cAP-23	100ml	Angio-Proteomie
Trypsin Neutralization Solution	cAP-28	100ml	Angio-Proteomie
ITS (100x)	cAP-26	10ml	Angio-Proteomie
L-Glutamine-MAXIMUM (100x)	cAP-27	100ml	Angio-Proteomie
Human Plasma Fibronectin Solution	cAP-42	1mg/ml	Angio-Proteomie

THESE PRODUCTS ARE FOR RESEARCH USE ONLY

Caution: Handling human and animal tissue derived products is potentially bio-hazardous. Although each cell strain is tested negative for HIV, HBV and HCV DNA, or pathogens, diagnostic tests are not necessarily 100% accurate; therefore proper precautions must be taken to avoid inadvertent exposure. Always wear gloves and safety glasses when working with these materials. Never mouth pipette. We recommend following the universal procedures for handling products of human origin as the minimum precaution against contamination.