

## Rabbit anti HER-2 (pTyr1221/1222)

**Catalog Number:** pAP11076

**Amount:** 100µl (for 10 Western Blotting)

**Form of Antibody:** Rabbit IgG in phosphate buffered saline (without  $Mg^{2+}$  and  $Ca^{2+}$ ), pH 7.4, 150mM NaCl, 0.02% sodium azide and 50% glycerol.

**Storage/Stability:** Store at -20°C/1 year

**Immunogen:** The antiserum was produced against synthesized phosphopeptide derived from human HER2 around the phosphorylation site of tyrosine1221/1222 (N-L-Y<sup>P</sup>-Y<sup>P</sup>-W).

**Purification:** The antibody was affinity-purified from rabbit antiserum by affinity-chromatography using epitope-specific phosphopeptide. The antibody against non-phosphopeptide was removed by chromatography using non-phosphopeptide corresponding to the phosphorylation site.

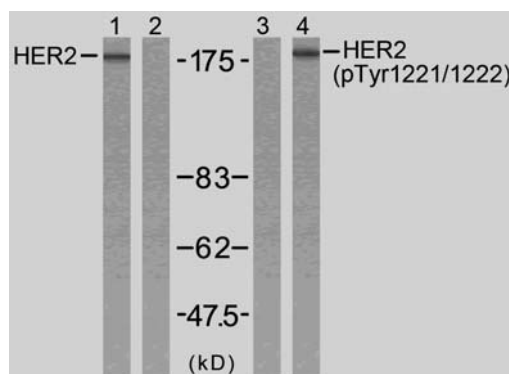
**Specificity/Sensitivity:** HER2 (phospho-Tyr1221/Tyr1222) antibody detects endogenous levels of HER2 only when phosphorylated at tyrosine 1221/1222.

**Reactivity:** Human

**Applications:** WB: 1:1000

**Swiss-Prot No. :** P04626

**References:** Marone R, et al. (2004) Nat Cell Biol; 6(6): 515-22.  
Ren Z, et al. (2002) J Biol Chem; 277(41): 38486-93.



Western blot analysis of extracts from SK-OV3 cells using HER2 (Ab-1221/1222) antibody (AP21071, Line 1 and 2) and HER2 (phospho-Tyr1221/Tyr1222) antibody (pAP11076, Line 3 and 4).

**For Research Use Only**

Contact & Ordering Information: Angio-Proteomie, 11 Park Drive, Suite 12, Boston, MA 02215, USA. Fax: (480) 247-4337, [angioproteomie@gmail.com](mailto:angioproteomie@gmail.com)