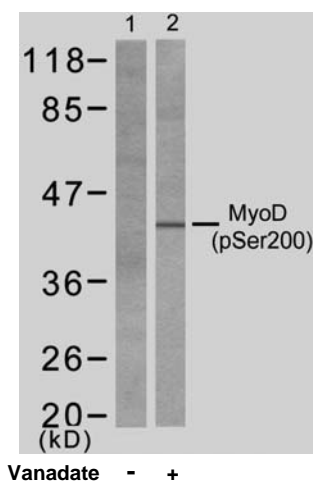


## Rabbit anti MyoD (pSer200)

- Catalog Number:** pAP11077  
**Amount:** 100µl (for 10 Western Blotting)  
**Swiss-Prot No. :** P15172  
**Form of Antibody:** Rabbit IgG in phosphate buffered saline (without Mg<sup>2+</sup> and Ca<sup>2+</sup>), pH 7.4, 150mM NaCl, 0.02% sodium azide and 50% glycerol.  
**Storage/Stability:** Store at -20°C/1 year  
**Immunogen:** The antiserum was produced against synthesized phosphopeptide derived from human MyoD around the phosphorylation site of serine 200 (A-S-S<sup>P</sup>P-R).  
**Purification:** The antibody was affinity-purified from rabbit antiserum by affinity-chromatography using epitope-specific phosphopeptide. The antibody against non-phosphopeptide was removed by chromatography using non-phosphopeptide corresponding to the phosphorylation site.  
**Specificity/Sensitivity:** MyoD (phospho-Ser200) antibody detects endogenous levels of MyoD only when phosphorylated at serine 200.  
**Reactivity:** Human, Mouse, Rat  
**Applications:** WB: 1:1000  
**References:** Emmanuel G, et al. J. Biol. Chem., Jun 2000; 275: 18767 - 18776  
 Tintignac LA, et al. Mol Cell Biol. 2004 Feb; 24(4): 1809-1821.  
 Kitzmann M, et al. Mol Cell Biol. 1999 Apr; 19(4): 3167-3176.



Western blot analysis of extract from HeLa cells, untreated or treated with vanadate (1mg/ml, 30min), using MyoD (phospho- Ser200) antibody (pAP11077).

**For Research Use Only**

Contact & Ordering Information: Angio-Proteomie, 11 Park Drive, Suite 12, Boston, MA 02215, USA. Fax: (480) 247-4337, [angioproteomie@gmail.com](mailto:angioproteomie@gmail.com)