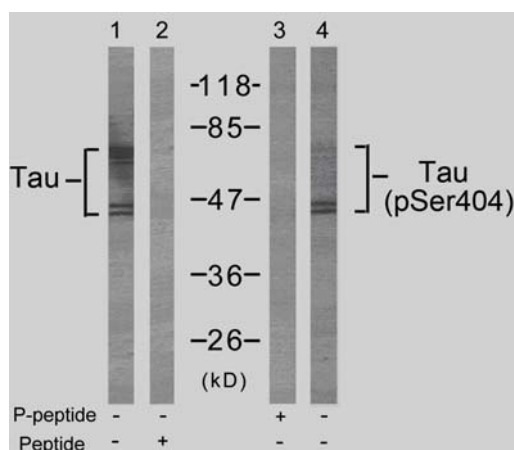


Rabbit anti Tau (pSer404)

- Catalog Number:** pAP11112
- Amount:** 100µl (for 10 Western Blotting)
- Form of Antibody:** Rabbit IgG in phosphate buffered saline (without Mg²⁺ and Ca²⁺), pH 7.4, 150mM NaCl, 0.02% sodium azide and 50% glycerol.
- Storage/Stability:** Store at -20°C/1 year
- Immunogen:** The antiserum was produced against synthesized phosphopeptide derived from human Tau around the phosphorylation site of serine 404 (D-T-S^P-P-R).
- Purification:** The antibody was affinity-purified from rabbit antiserum by affinity-chromatography using epitope-specific phosphopeptide. The antibody against non-phosphopeptide was removed by chromatography using non-phosphopeptide corresponding to the phosphorylation site.
- Specificity/Sensitivity:** Tau (phospho-Ser404) antibody detects endogenous levels of Tau only when phosphorylated at serine404.
- Reactivity:** Human, Mouse, Rat
- Applications:** WB: 1:1000
- Swiss-Prot No. :** P10636
- References:** Li G, Yin H, et.al .(2004) J Biol Chem ; 279(16): 15938-45.
Noble W, et al. (2003) Neuron ; 38(4): 555-65.
Giasson BI, et al.(2002).. Biochemistry; 41(51): 15376-87.
Lee G., et.al. (1989). Neuron 2:1615-1624.
Andreadis A.,et.al. (1992) Biochemistry 31:10626-10633.



Western blot analysis of extract from mouse brain tissue using Tau (Ab-404) antibody (AP21101, Lane 1 and 2) and Tau (phospho-Ser404) antibody (pAP11112, Lane 3 and 4).

For Research Use Only

Contact & Ordering Information: Angio-Proteomie, 11 Park Drive, Suite 12, Boston, MA 02215, USA. Fax: (480) 247-4337, angioproteomie@gmail.com