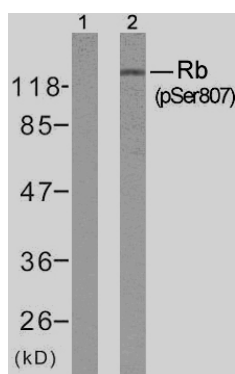


Rabbit anti Rb (pSer807)

- Catalog Number:** pAP11131
- Amount:** 100µl (for 10 Western Blotting)
- Form of Antibody:** Rabbit IgG in phosphate buffered saline (without Mg^{2+} and Ca^{2+}), pH 7.4, 150mM NaCl, 0.02% sodium azide and 50% glycerol.
- Storage/Stability:** Store at -20°C/1 year
- Immunogen:** The antiserum was produced against synthesized phosphopeptide derived from human Rb around the phosphorylation site of serine 807 (Y-I-S^P-P-L).
- Purification:** The antibody was affinity-purified from rabbit antiserum by affinity-chromatography using epitope-specific phosphopeptide. The antibody against non-phosphopeptide was removed by chromatography using non-phosphopeptide corresponding to the phosphorylation site.
- Specificity/Sensitivity:** Rb (phospho-Ser807) antibody detects endogenous levels of Rb only when phosphorylated at serine 807.
- Reactivity:** Human, Mouse, Rat
- Applications:** WB: 1:1000
- Swiss-Prot No. :** P06400
- References:** Roesch A, et al. (2005) Mod Pathol. 18(4): 565-572.
Chadee DN, et al. (2004) Nat Cell Biol. 6(8): 770-776.
Knudsen ES, et al. (1997) Mol Cell Biol. 17(10): 5771-5783.
Knudsen ES, et al. (1996) J Biol Chem. 271(14): 8313-8320.



Serum 0 20 hrs

Western blot analysis of extracts from K562 cells untreated or treated with 10% serum after 48 hours of starvation, using Rb (phospho-Ser807) antibody (pAP11131).

For Research Use Only

Contact & Ordering Information: Angio-Proteomie, 11 Park Drive, Suite 12, Boston, MA 02215, USA. Fax: (480) 247-4337, angioproteomie@gmail.com