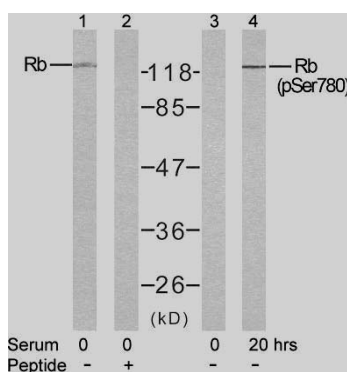




11 Park Drive, Suite 12
Boston, MA 02215

Rabbit anti Rb (pSer780)

- Catalog Number:** pAP11132
Amount: 100µl (for 10 Western Blotting)
Form of Antibody: Rabbit IgG in phosphate buffered saline (without Mg²⁺ and Ca²⁺), pH 7.4, 150mM NaCl, 0.02% sodium azide and 50% glycerol.
Storage/Stability: Store at -20°C/1 year
Immunogen: The antiserum was produced against synthesized phosphopeptide derived from human Rb around the phosphorylation site of serine 780 (T-L-S^P-P-I).
Purification: The antibody was affinity-purified from rabbit antiserum by affinity-chromatography using epitope-specific phosphopeptide. The antibody against non-phosphopeptide was removed by chromatography using non-phosphopeptide corresponding to the phosphorylation site.
Specificity/Sensitivity: Rb (phospho-Ser780) antibody detects endogenous levels of Rb only when phosphorylated at serine 780.
Reactivity: Human, Mouse, Rat
Applications: WB: 1:1000
Swiss-Prot No. : P06400
References: Roesch A, et al.(2005) Mod Pathol. 18(4): 565-572.
Huang H, et al.(2004) Oncogene. 23(12): 2161-2176.
Kitagawa M, et al.(1996) EMBO J. 15(24): 7060-7069.



Western blot analysis of extract from K562 cells untreated or treated with 10% serum after 48 hours of starvation, using Rb (Ab-780) antibody (AP21110, Lane 1 and 2) and Rb (phospho-Ser780) antibody (pAP11132, Lane 3 and 4).

For Research Use Only

Contact & Ordering Information: Angio-Proteomie, 11 Park Drive, Suite 12, Boston, MA 02215, USA. Fax: (480) 247-4337, angioproteomie@gmail.com