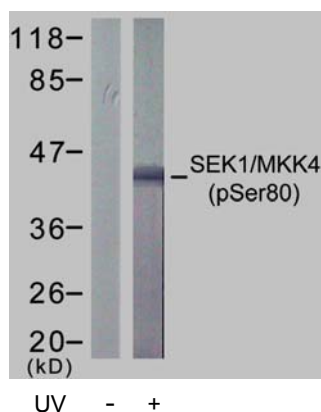


Rabbit anti SEK1/MKK4 (pSer80)

- Catalog Number:** pAP11177
Amount: 100µl (for 10 Western Blotting)
Form of Antibody: Rabbit IgG in phosphate buffered saline (without Mg^{2+} and Ca^{2+}), pH 7.4, 150mM NaCl, 0.02% sodium azide and 50% glycerol.
Storage/Stability: Store at -20°C/1 year
Immunogen: The antiserum was produced against synthesized phosphopeptide derived from human SEK1/MKK4 around the phosphorylation site of serine 80 (T-H-S^P-I-E).
Purification: The antibody was affinity-purified from rabbit antiserum by affinity-chromatography using epitope-specific phosphopeptide. The antibody against non-phosphopeptide was removed by chromatography using non-phosphopeptide corresponding to the phosphorylation site.
Specificity/Sensitivity: SEK1/MKK4 (phospho-Ser80) antibody detects endogenous levels of SEK1/MKK4 only when phosphorylated at serine 80.
Reactivity: Human, Mouse, Rat
Applications: WB: 1:1000
Swiss-Prot No. : P45985
References: Park HS, et al. (2002) J Biol Chem; 277(4): 2573-8.



Western blot analysis of extract from 293 cells treated or untreated with UV, using SEK1/ MKK4 (phospho-Ser80) antibody (pAP11177).

For Research Use Only

Contact & Ordering Information: Angio-Proteomie, 11 Park Drive, Suite 12, Boston, MA 02215, USA. Fax: (480) 247-4337, angioproteomie@gmail.com