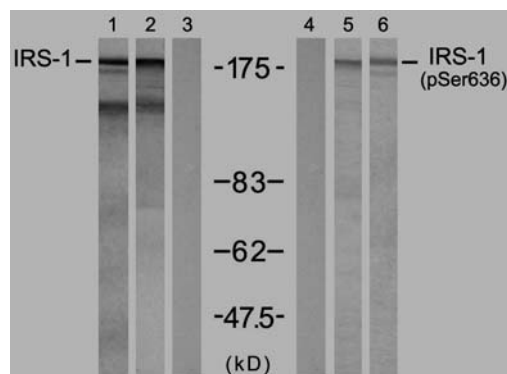


## Rabbit anti IRS-1 (pSer636)

- Catalog Number:** pAP11230  
**Amount:** 100µl (for 10 Western Blotting)  
**Swiss-Prot No. :** P35568  
**Form of Antibody:** Rabbit IgG in phosphate buffered saline (without Mg<sup>2+</sup> and Ca<sup>2+</sup>), pH 7.4, 150mM NaCl, 0.02% sodium azide and 50% glycerol.  
**Storage/Stability:** Store at -20°C/1 year  
**Immunogen:** The antiserum was produced against synthesized phosphopeptide derived from human IRS-1 around the phosphorylation site of serine 636 (P-M-S<sup>P</sup>-P-K).  
**Purification:** The antibody was affinity-purified from rabbit antiserum by affinity-chromatography using epitope-specific phosphopeptide. The antibody against non-phosphopeptide was removed by chromatography using non-phosphopeptide corresponding to the phosphorylation site.  
**Specificity/Sensitivity:** IRS-1 (phospho-Ser636) antibody detects endogenous levels of IRS-1 only when phosphorylated at serine 636.  
**Reactivity:** Human, Mouse, Rat  
**Applications:** WB: 1:1000  
**References:** Ozes ON, et al. (2001) Proc Natl Acad Sci U S A; 98(8): 4640-4645  
 Tzatsos A, et al. (2006) Mol Cell Biol; 26(1): 63-76  
 Kadowaki T, et al. (2000) J Clin Invest; 106(4): 459-465  
 Ozes ON, et al. (2001) Proc Natl Acad Sci U S A; 98(8): 4640-4645  
 Szanto I, et al. (2000) Proc Natl Acad Sci U S A; 97(5): 2355-2360



<b>Insulin</b>	+	-	-	-	-	+
<b>PMA</b>	-	+	+	-	+	-
<b>Peptide</b>	-	-	+	-	-	-

Western blot analysis of extracts from 293 cells treated with insulin(100nM, 30min) or PMA (0.2µM, 15min) using IRS-1 (Ab-636) antibody (AP21223, Lane 1, 2 and 3) and IRS-1 (phospho-Ser636) antibody (pAP11230, Lane 4, 5 and 6).

**For Research Use Only**

Contact & Ordering Information: Angio-Proteomie, 11 Park Drive, Suite 12, Boston, MA 02215, USA. Fax: (480) 247-4337, [angioproteomie@gmail.com](mailto:angioproteomie@gmail.com)