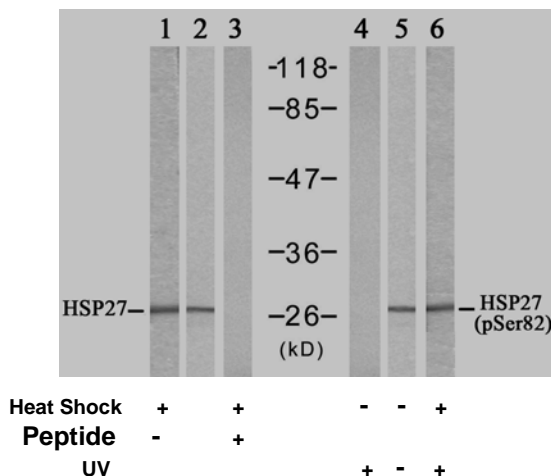


## Rabbit anti HSP27 (pSer82)

- Catalog Number:** pAP11248  
**Amount:** 100µl (for 10 Western Blotting)  
**Swiss-Prot No. :** P04792  
**Form of Antibody:** Rabbit IgG in phosphate buffered saline (without  $Mg^{2+}$  and  $Ca^{2+}$ ), pH 7.4, 150mM NaCl, 0.02% sodium azide and 50% glycerol.  
**Storage/Stability:** Store at -20°C/1 year  
**Immunogen:** The antiserum was produced against synthesized phosphopeptide derived from human HSP27 around the phosphorylation site of serine 82 (Q-L-S<sup>P</sup>-S-G).  
**Purification:** The antibody was affinity-purified from rabbit antiserum by affinity-chromatography using epitope-specific phosphopeptide. The antibody against non-phosphopeptide was removed by chromatography using non-phosphopeptide corresponding to the phosphorylation site.  
**Specificity/Sensitivity:** HSP27 (phospho-Ser82) antibody detects endogenous levels of HSP27 only when phosphorylated at serine 82.  
**Reactivity:** Human  
**Applications:** WB: 1:1000  
**References:** White MY, et al. (2006) J Mol Cell Cardiol. 40(6): 761-74  
Xiankui Sun, et al. (2006) Cell Stress Chaperones. 11(1): 61-70  
Matthias Meier; et al. (2001) Hypertension. 38:1260  
Ali Dana, et al. (2000) Circulation Research. 86: 989



Western blot analysis of extracts from HeLa cells untreated or treated with Heat Shock or UV, using HSP27 (Ab-82) antibody (AP21240, Lane 1, 2 and 3) and HSP27 (Phospho-Ser82) antibody (pAP11248, Lane 4, 5 and 6).

**For Research Use Only**

Contact & Ordering Information: Angio-Proteomie, 11 Park Drive, Suite 12, Boston, MA 02215, USA. Fax: (480) 247-4337, [angioproteomie@gmail.com](mailto:angioproteomie@gmail.com)