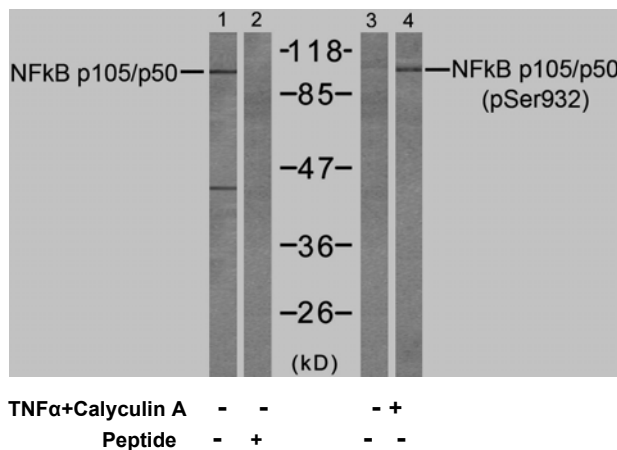




11 Park Drive, Suite 12
Boston, MA 02215

Rabbit anti NFκB-p105/p50 (pSer932)

- Catalog Number:** pAP11251
Amount: 100μl (for 10 Western Blotting)
Swiss-Prot No. : P19838
Form of Antibody: Rabbit IgG in phosphate buffered saline (without Mg²⁺ and Ca²⁺), pH 7.4, 150mM NaCl, 0.02% sodium azide and 50% glycerol.
Storage/Stability: Store at -20°C/1 year
Immunogen: The antiserum was produced against synthesized phosphopeptide derived from human NFκB-p105/p50 around the phosphorylation site of serine 932 (E-T-S^P-F-R).
Purification: The antibody was affinity-purified from rabbit antiserum by affinity-chromatography using epitope-specific phosphopeptide. The antibody against non-phosphopeptide was removed by chromatography using non-phosphopeptide corresponding to the phosphorylation site.
Specificity/Sensitivity: NFκB-p105/p50 (phospho-Ser932) antibody detects endogenous levels of NFκB-p105/p50 only when phosphorylated at serine 932.
Reactivity: Human, Mouse, Rat
Applications: WB: 1:1000
References: Sören Beinke et al. (2004) Biochem J. 382(Pt 2): 393–409.
 Vigo Heissmeyer¹, et al. (1999) The EMBO Journal 18: 4766–4778,
 F Chen, et al. (2006) Cell Death and Differentiation 13: 1835–1838.
 Kris A. Steinbrecher, et al. (2005) Mol Cell Biol. 25(19): 8444–8455.



Western blot analysis of extracts from HeLa cells, untreated or treated with TNFα (20ng/ml 5min) and Calyculin A (50nM 15min), using NFκB p105/p50 (Ab-932) antibody (AP21243, Line 1 and 2) and NFκB p105/p50 (phospho-Ser932) antibody (pAP11251, Line 3 and 4)

For Research Use Only

Contact & Ordering Information: Angio-Proteomie, 11 Park Drive, Suite 12, Boston, MA 02215, USA. Fax: (480) 247-4337, angioproteomie@gmail.com