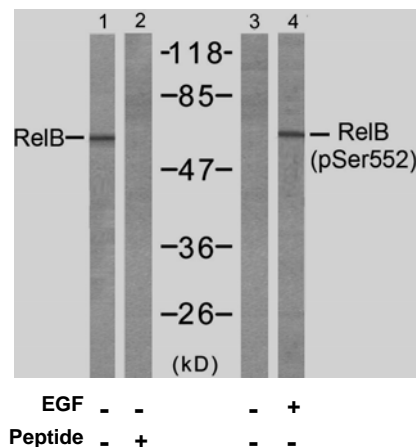


Rabbit anti RelB (pSer552)

- Catalog Number:** pAP11255
Amount: 100µl (for 10 Western Blotting)
Swiss-Prot No. : Q01201
Form of Antibody: Rabbit IgG in phosphate buffered saline (without Mg^{2+} and Ca^{2+}), pH 7.4, 150mM NaCl, 0.02% sodium azide and 50% glycerol.
Storage/Stability: Store at -20°C/1 year
Immunogen: The antiserum was produced against synthesized phosphopeptide derived from human RelB around the phosphorylation site of serine 552 (L-L-S^P-P-G).
Purification: The antibody was affinity-purified from rabbit antiserum by affinity-chromatography using epitope-specific phosphopeptide. The antibody against non-phosphopeptide was removed by chromatography using non-phosphopeptide corresponding to the phosphorylation site.
Specificity/Sensitivity: RelB (phospho-Ser552) antibody detects endogenous levels of RelB only when phosphorylated at serine 552.
Reactivity: Human, Mouse, Rat
Applications: WB: 1:1000
References: Marienfeld R, et al. (2001) Oncogene. 20 (56): 8142-7.
Charlotte S. Kaetzel1, et al. (2005) Immunological Reviews Volume 206: 83
Elwira Pyz, et al. (2006) J Immunol. 176:7447-55



Western blot analysis of extracts from A431 cells, untreated or treated with EGF (200ng/ml 10min), using RelB (Ab-552) antibody (AP21247, Line 1 and 2) and RelB (phospho- Ser552) antibody (pAP11255, Line 3 and 4).

For Research Use Only

Contact & Ordering Information: Angio-Proteomie, 11 Park Drive, Suite 12, Boston, MA 02215, USA. Fax: (480) 247-4337, angioproteomie@gmail.com