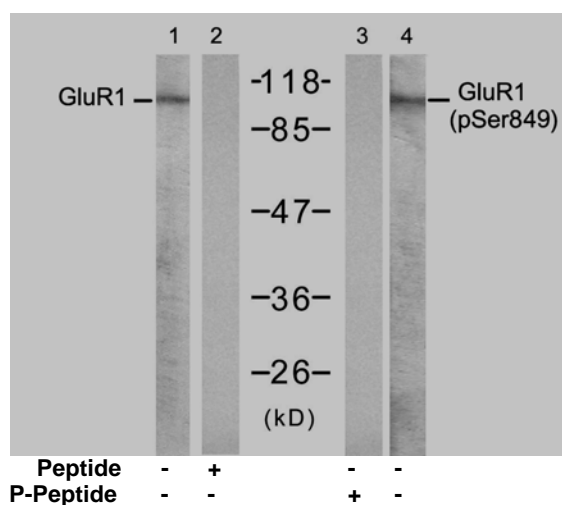


Rabbit anti GluR1 (pSer849)

- Catalog Number:** pAP11261
Amount: 100µl (for 10 Western Blotting)
Swiss-Prot No. : P42261
Form of Antibody: Rabbit IgG in phosphate buffered saline (without Mg^{2+} and Ca^{2+}), pH 7.4, 150mM NaCl, 0.02% sodium azide and 50% glycerol.
Storage/Stability: Store at -20°C/1 year
Immunogen: The antiserum was produced against synthesized phosphopeptide derived from human GluR1 around the phosphorylation site of serine 849 (Q-Q-S^P-I-N).
Purification: The antibody was affinity-purified from rabbit antiserum by affinity-chromatography using epitope-specific phosphopeptide. The antibody against non-phosphopeptide was removed by chromatography using non-phosphopeptide corresponding to the phosphorylation site.
Specificity/Sensitivity: GluR1(phospho-Ser849) Antibody detects endogenous levels of GluR1 only when phosphorylated at serine 849.
Reactivity: Human, Mouse, Rat
Applications: WB: 1:1000
References: Emamian ES, et al. (2004) J Neurosci. 24(7): 1561-4
Palmer, C.L. et al. (2005) Pharmacol. Rev. 57, 253-277.



Western blot analysis of extract from mouse brain tissue, using GluR1 (Ab-849) antibody (AP21253, Lane 1 and 2) and GluR1 (phospho-Ser849) antibody (pAP11261, Lane 3 and 4).

For Research Use Only

Contact & Ordering Information: Angio-Proteomie, 11 Park Drive, Suite 12, Boston, MA 02215, USA. Fax: (480) 247-4337, angioproteomie@gmail.com