

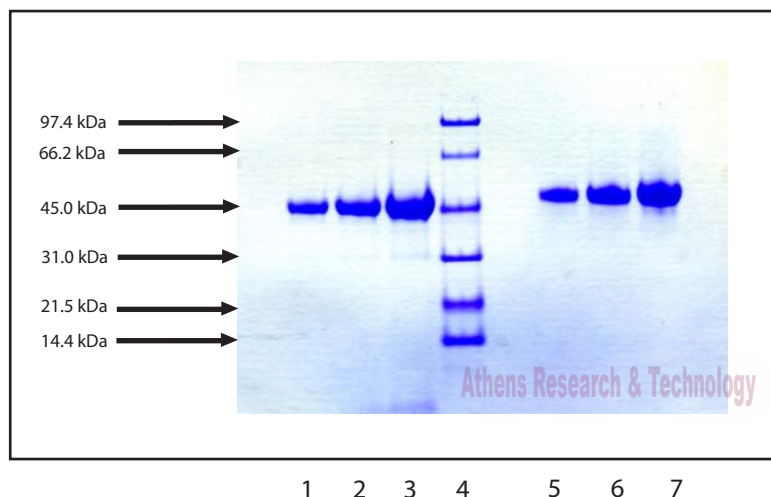
Athens Research & Technology

110 Trans Tech Drive Athens, GA 30601 USA
PHONE: 706-546-0207 • FAX: 706-546-7395 • EMAIL: ARTBIO@ATHENSRESEARCH.COM
www.athensresearch.com

Gel Scan of Representative Lot

Alpha-2-HS Glycoprotein, Human Plasma

ART Catalog No. 16-16-081907



SDS-PAGE:

4-12% Bis-Tris NuPAGE gel

1. Alpha-2-HS Glycoprotein - 5 μ g (reduced / heated)
2. Alpha-2-HS Glycoprotein - 10 μ g (reduced / heated)
3. Alpha-2-HS Glycoprotein - 20 μ g (reduced / heated)
4. LMW Standard (BIO-RAD Cat. No. 161-0304)
5. Alpha-2-HS Glycoprotein - 5 μ g (non-reduced / no heat)
6. Alpha-2-HS Glycoprotein - 10 μ g (non-reduced / no heat)
7. Alpha-2-HS Glycoprotein - 20 μ g (non-reduced / no heat)

Molecular Weight: 49,000

Protein Determination:

Extinction Coefficient (E) $\frac{0.1\% \text{ at } 280\text{nm}}{1\text{cm pathway}} = 0.54$

Physical Specifications:

Lyophilized
Purity: $\geq 90\%$ by SDS-PAGE

Considerations:

Storage Conditions: $\leq -20^\circ \text{C}$

Stability > 1 year

Buffer: 20 mM Tris-HCl, pH 8.0, with 200 mM NaCl

Virginia B. Patel PhD

Athens Research & Technology

110 Trans Tech Drive Athens, GA 30601 USA
PHONE: 706-546-0207 • FAX: 706-546-7395 • EMAIL: ARTBIO@ATHENSRESEARCH.COM
www.athensresearch.com

Product Datasheet

Product:	Alpha-2-HS Glycoprotein, Human Plasma
Catalog Number:	16-16-081907
Description:	Lyophilized
Buffer:	20 mM Tris-HCl, pH 8.0, with 200 mM NaCl
Purity:	>=90% by SDS-PAGE
Molecular Weight:	MW 49,000
Protein Determination:	Extinction Coefficient (E) $\frac{0.1\% \text{ at } 280\text{nm}}{1\text{cm pathway}} = 0.54$
Storage:	<= -20° C
Stability:	> 1 year
Available Packaging:	1 mg per vial Larger aliquots may be available upon request
Source:	Human Plasma
Testing:	Shown to be non reactive for HBsAg, anti-HCV, anti-HBc, and negative for anti-HIV 1 & 2 by FDA approved tests.

**Athens Research & Technology products are laboratory reagents and are not to be administered to humans or used for any drug purpose.
For research use or for use in further manufacturing.**