

Product Datasheet

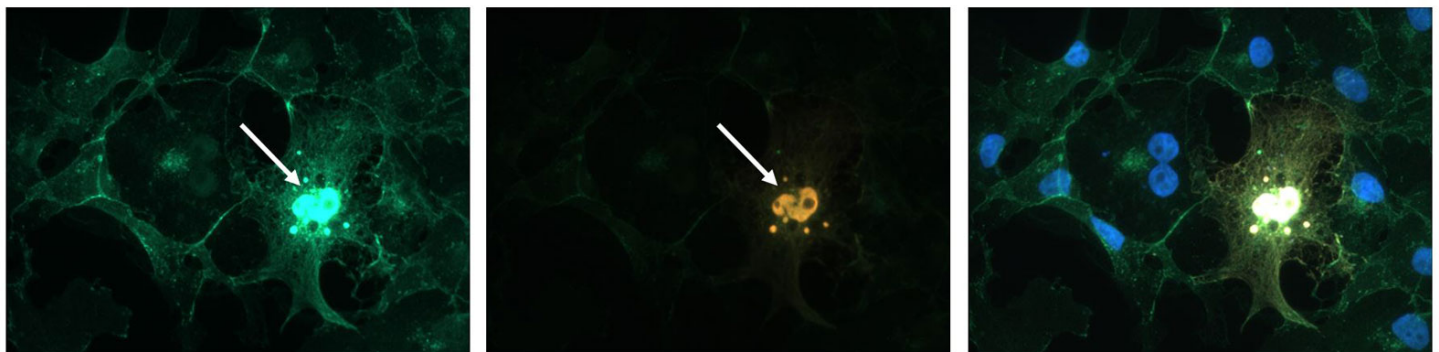
Chickens make *better* antibodies.

Anti-Beta-Catenin Antibody

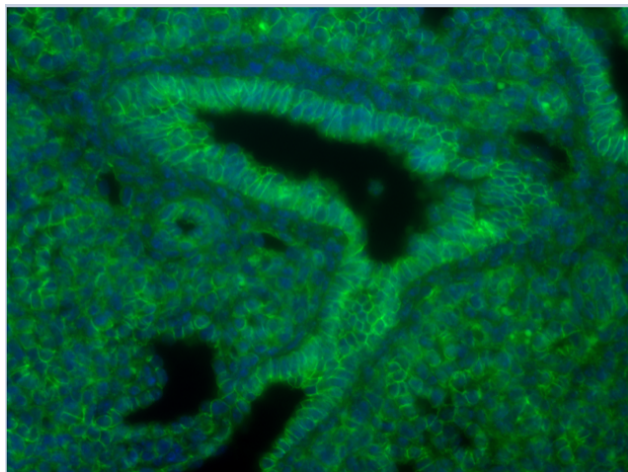
Overview

Catalog #	BCAT-0100 (500 µL size) or BCAT-0020 (100 µL size)
Concentration	0.2 mg/mL
Host Species	Chicken Polyclonal
Format	Affinity Purified IgY
Buffer	Phosphate-buffered (10 mM) isotonic (0.9%, w/v) saline ("PBS," pH 7.2) with sodium azide (0.02%, w/v) added as a preservative.
Applications	IHC 1:100-1:500 ICC 1:100-1:500 WB 1:500-1:1000
Species Reactivity	Human, Mouse, and Rat
Immunogen	KLH-conjugated peptide encoding sequence near C-terminus of protein
Molecular Weight	90 kDa
Cite this Antibody	Aves Labs Cat# BCAT-0100, or Aves Labs Cat# BCAT-0020; RRID: AB_2924439

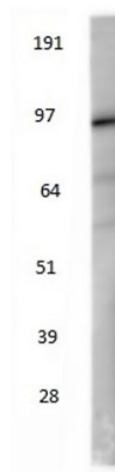
Images



Staining of COS7 cells overexpressing FLAG-tagged beta-catenin with: chicken anti-beta catenin antibody BCAT (left panel in green) showing both endogenous staining of beta catenin in COS7 cells and staining of overexpressed nuclear beta-catenin (white arrow), anti-FLAG staining of overexpressed nuclear beta-catenin (middle panel in red), and overlay (right panel) with DAPI staining of nuclei to show all cells.



Staining of paraffin wax mouse lung sections using beta-catenin antibody (Cat. No. BCAT, 1:100 dilution) with antigen retrieval and biotinylated secondary antibodies plus streptavidin. Image courtesy of Kuan Zhang (UCSF).



Western blot staining of endogenous beta-catenin in HEK-293T cells using chicken anti-beta catenin antibody BCAT.

Details

Target Description	Beta-catenin (CTNNB1) is an adherens junction protein critical for the establishment and maintenance of epithelial layers while at the same time is also a transcription factor and key downstream component of the canonical Wnt signaling pathway which regulates cell fate during development and also contributes to malignant transformation in various cancers.
Purification Method	Eggs from hens hyperimmunized with target were used to prepare an IgY fraction which was then subjected to antigen-specific affinity purification.
Quality Control Tests	Each new lot of this antibody is tested to confirm that it recognizes a single immunoreactive band of expected molecular weight when used in Western blot on lysate from cells expressing endogenous beta catenin.
Storage	Store at 4°C in the dark. Under these conditions, the antibodies should have a shelf life of at least twelve months, provided they remain sterile. For longer term storage, aliquot and freeze to avoid freeze-thaw of the antibody.

Our Guarantee

As an original manufacturer, we are dedicated to creating quality and reproducible antibodies that further your research. We provide personalized customer support from the scientists that made the antibody and offer a free replacement or 100% refund if we cannot resolve an issue. Order today and experience how chickens make better antibodies.

Note: For research use only. Not intended for therapeutic or diagnostic use. Use of all products is subject to our terms and conditions, viewable on our website.