

## Product Datasheet

Chickens make *better* antibodies.

# Anti-Coronin 1A Antibody

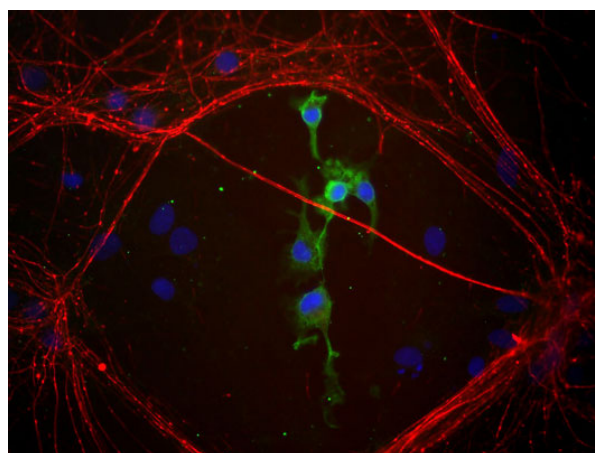
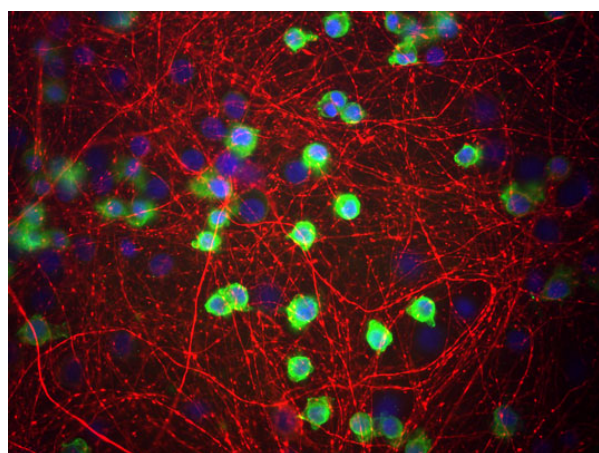
## Overview

---

<b>Catalog #</b>	COR
<b>Concentration</b>	100 µg/mL
<b>Host Species</b>	Chicken Polyclonal
<b>Format</b>	Affinity-Purified IgY
<b>Buffer</b>	Phosphate-buffered (10 mM) isotonic (0.9%, w/v) saline ("PBS," pH 7.2) with sodium azide (0.02%, w/v) added as a preservative.
<b>Applications</b>	IHC 1:1000-1:2000 ICC 1:1000-1:2000 WB 1:5000-1:10000
<b>Species Reactivity</b>	Human, Mouse, and Rat
<b>Immunogen</b>	Synthetic peptide
<b>Molecular Weight</b>	51 kDa
<b>Cite this Antibody</b>	Aves Labs Cat# COR, RRID: AB_2313539

## Images

---



Co-staining of Coronin1 (COR, green, 1:1000 dilution) and Internexin (rabbit antibody, red, 1:500) in a culture of mouse cerebral cortical tissue fixed with 4% paraformaldehyde. Photo by Dr. Gerry Shaw, Univ. Florida.

## Details

---

<b>Target Description</b>	Human Coronin 1a is a 51,026 dalton protein (461 amino acids) selectively expressed in cells involved in immune surveillance throughout the body, including activated microglial cells of the CNS. It is a member of the WD40 (tryptophan-aspartate) gene family, which includes the beta subunit of the trimeric G proteins as the prototype. Its function is presumably in membrane structural reorganization accompanying antigen-presentation.
<b>Purification Method</b>	Chickens were immunized with a synthetic peptide / keyhole limpet hemocyanin (KLH) conjugate. This synthetic peptide corresponded to a sequence shared between the human (NM_007074) and mouse (NM_009898) gene products. After repeated injections, immune eggs were collected, the IgY fractions were purified from the yolks, and then affinity purified using a peptide column. The concentration of the eluate was then adjusted to 100 µg/mL, and the preparation was filter-sterilized.
<b>Quality Control Tests</b>	Quality assurance analysis was performed using immunohistochemistry (at a dilution of 1:2000) using fluorescein-labeled goat anti-chicken IgY (1:500 dilution, Aves Labs Cat.# F-1005) as the secondary reagent.
<b>Storage</b>	Store at 4°C in the dark. Under these conditions, the antibodies should have a shelf life of at least twelve months, provided they remain sterile. For longer term storage, aliquot and freeze to avoid freeze-thaw of the antibody.

## Our Guarantee

---

As an original manufacturer, we are dedicated to creating quality and reproducible antibodies that further your research. We provide personalized customer support from the scientists that made the antibody and offer a free replacement or 100% refund if we cannot resolve an issue. Order today and experience how chickens make better antibodies.

**Note:** For research use only. Not intended for therapeutic or diagnostic use. Use of all products is subject to our terms and conditions, viewable on our website.