

## Product Datasheet

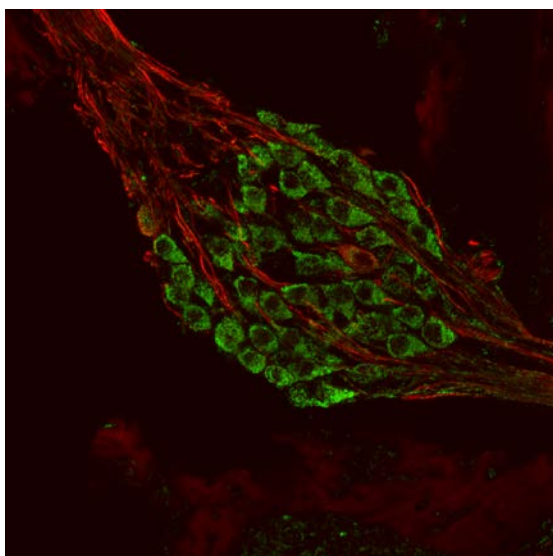
Chickens make *better* antibodies.

# Anti-Metabotropic Glutamate Receptor Type 1 (mGluR1) Antibody

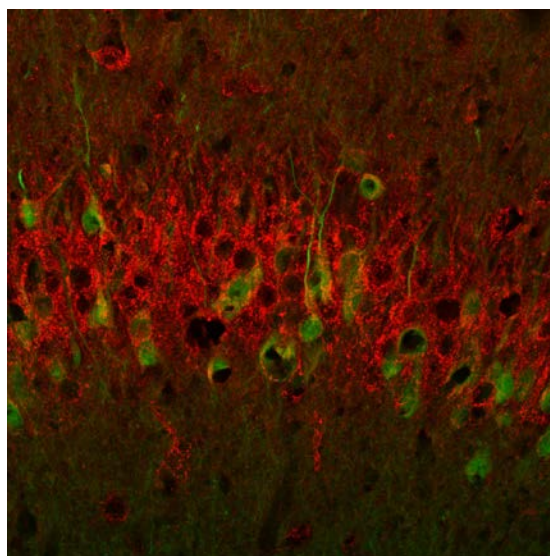
## Overview

<b>Catalog #</b>	ER1
<b>Concentration</b>	300 µg/mL
<b>Host Species</b>	Chicken Polyclonal
<b>Format</b>	Affinity-Purified IgY
<b>Buffer</b>	Phosphate-buffered (10 mM) isotonic (0.9%, w/v) saline ("PBS," pH 7.2) with sodium azide (0.02%, w/v) added as a preservative.
<b>Applications</b>	IHC 1:1000-1:2000 ICC 1:1000-1:2000
<b>Species Reactivity</b>	Human, Mouse, and Rat
<b>Immunogen</b>	Synthetic peptides
<b>Molecular Weight</b>	130 kDa
<b>Cite this Antibody</b>	Aves Labs Cat# ER1, RRID: AB_2313541

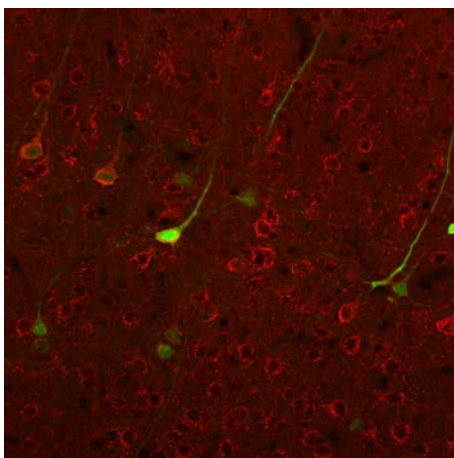
## Images



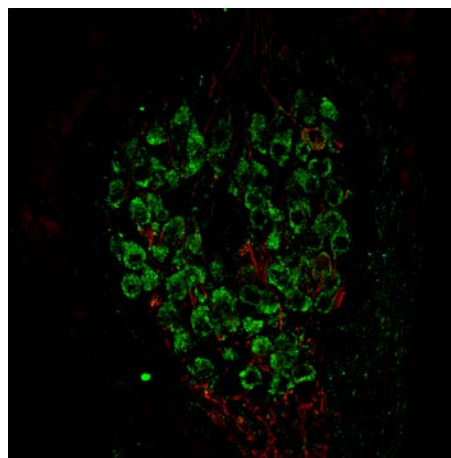
Metabotropic glutamate receptor type 1 (1:1000 dilution, green) immunoreactivity and neurofilament-M (NF-M, rabbit antibody, 1:500 dilution) immunoreactivity in a tissue section through an e18 mouse cochlear ganglion.



Metabotropic glutamate receptor type 1 (1:1000 dilution, green) immunoreactivity and neurofilament-M (NF-M, rabbit antibody, 1:500 dilution) immunoreactivity in a tissue section through the VSA3 region of the hippocampal formation of an e18 mouse embryo.



Metabotropic glutamate receptor type 1 (1:1000 dilution, green) immunoreactivity and neurofilament-M (NF-M, rabbit antibody, 1:500 dilution, red) immunoreactivity in a tissue section through the parietal cortex of an e18 mouse embryo.



Metabotropic glutamate receptor type 1 (1:1000 dilution, green) immunoreactivity and neurofilament-M (NF-M, rabbit antibody, 1:500 dilution, red) immunoreactivity in a tissue section through an e18 mouse cochlear ganglion.

## Details

---

### Target Description

The metabotropic glutamate receptors (mGluRs) represent a gene family of G-protein-coupled receptors, all of which bind the amino acid glutamate (the major excitatory neurotransmitter of the nervous system) but differ in their primary amino acid structure, their pharmacology, and their distribution in the peripheral and central nervous systems. In general, mGluR1 and mGluR5 receptors are post-synaptic and mGluR2 and mGluR3 receptors are pre-synaptic.

### Purification Method

Chickens were immunized with three synthetic peptide / keyhole limpet hemocyanin (KLH) conjugates. These synthetic peptides corresponded to different regions of the metabotropic glutamate receptor type 1 gene product, but are shared between the human (NP\_000829.2, NCBI) and mouse (NP\_058672.1, NCBI) sequences. After repeated injections, immune eggs were collected, and the IgY fractions were purified from the yolks. These IgY fractions were then affinity purified using a peptide column, and the concentrations of the eluates adjusted to 300 µg/mL. Finally, equal volumes of these affinity-purified anti-peptide antibodies were mixed, and the preparation was filter-sterilized.

### Quality Control Tests

This anti-peptide antibody mixture was analyzed by immunohistochemistry (at a dilution of 1:2000) using fluorescein-labeled goat anti-chicken IgY (1:500 dilution, Aves Labs Cat.# F-1005) as the secondary reagent.

### Storage

Store at 4°C in the dark. Under these conditions, the antibodies should have a shelf life of at least twelve months, provided they remain sterile. For longer term storage, aliquot and freeze to avoid freeze-thaw of the antibody.

## Our Guarantee

---

As an original manufacturer, we are dedicated to creating quality and reproducible antibodies that further your research. We provide personalized customer support from the scientists that made the antibody and offer a free replacement or 100% refund if we cannot resolve an issue. Order today and experience how chickens make better antibodies.

**Note:** For research use only. Not intended for therapeutic or diagnostic use. Use of all products is subject to our terms and conditions, viewable on our website.