

Product Datasheet

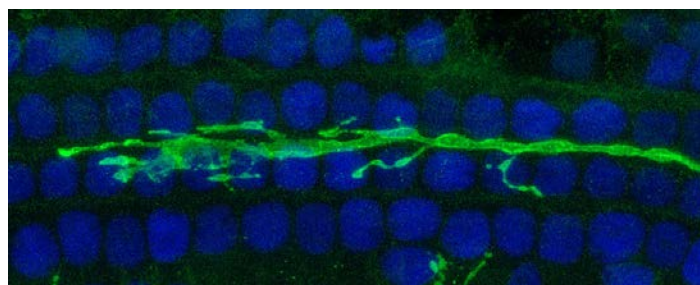
Chickens make *better* antibodies.

Anti-V5 Antibody

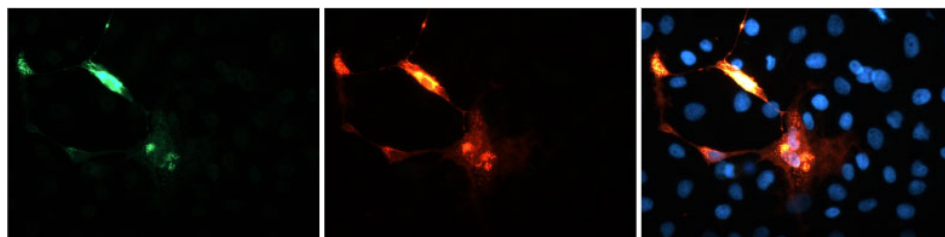
Overview

Catalog #	ET-V5-0100 (500 µL size) or ET-V5-0020 (100 µL size)
Concentration	0.2 mg/mL
Host Species	Chicken Polyclonal
Format	Affinity purified
Buffer	Phosphate-buffered (10 mM) isotonic (0.9%, w/v) saline ("PBS," pH 7.2) with sodium azide (0.02%, w/v) added as a preservative.
Applications	ICC 1:100-1:500 WB 1:500-1:1000
Species Reactivity	N/A
Immunogen	Synthetic peptide encoding 14 amino acid V5 epitope fused to KLH carrier protein
Molecular Weight	N/A
Cite this Antibody	Aves Labs Cat# ET-V5-0100, or Aves Labs Cat# ET-V5-0020; RRID: AB_2910559

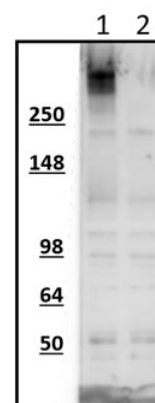
Images



Mouse auditory neurons expressing a V5-tagged reporter protein were stained with Aves Labs chicken anti-V5 antibody at 1:500. Photo courtesy of Thomas Coate.



Immunofluorescence of COS7 cells expressing a V5-tagged expression plasmid and then stained with chicken anti-V5 antibodies (green) and the leading mouse anti-V5 antibody (red). Blue is DAPI nuclear stain showing nuclei of both transfected and untransfected cells. Staining shows 100% correspondence between the two antibodies for recognition of transfected cells.



Western blot of HEK293 cells transfected with V5-tagged CASR (lane 1) or mock transfected cells (lane 2) using chicken α -V5 antibody showing specific immunolabeling at the expected molecular weight.

Details

Target Description	The V5 epitope tag is derived from a protein epitope found in the P and V proteins of paramyxovirus from the simian virus 5 family. The V5 tag is generally added as an epitope tag to proteins using all 14 amino acids (GKPIPNPLLGLDST), but it may also be used with a shorter 9-amino acid (IPNPLLGLD) sequence. Proteins tagged with the V5 epitope tag are detected with high sensitivity and specificity using our chicken anti-V5 antibody using various applications including western blot, immunocytochemistry, and immunohistochemistry.
Purification Method	Eggs from hens hyperimmunized with target were used to prepare an IgY fraction which was then subjected to antigen-specific affinity purification
Quality Control Tests	Each new lot of this antibody is tested to confirm that it recognizes a single immunoreactive band of expected molecular weight when used in Western blot on a V5 overexpression cell lysate.
Storage	Store at 4°C in the dark. Under these conditions, the antibodies should have a shelf life of at least twelve months, provided they remain sterile. For longer term storage, aliquot and freeze to avoid freeze-thaw of the antibody.

Our Guarantee

As an original manufacturer, we are dedicated to creating quality and reproducible antibodies that further your research. We provide personalized customer support from the scientists that made the antibody and offer a free replacement or 100% refund if we cannot resolve an issue. Order today and experience how chickens make better antibodies.

Note: For research use only. Not intended for therapeutic or diagnostic use. Use of all products is subject to our terms and conditions, viewable on our website.