

Product Datasheet

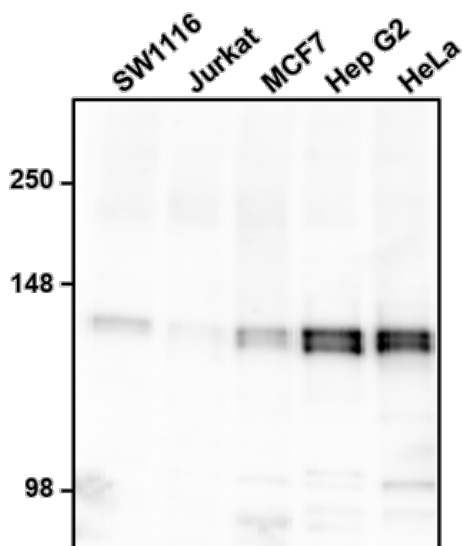
Chickens make *better* antibodies.

Anti-GOLGA2 (GM130) Antibody

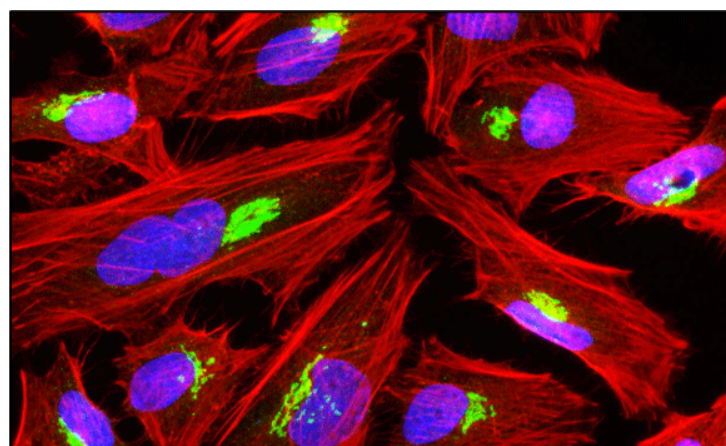
Overview

Catalog #	GOLGA2-0100 (500 µL size) or GOLGA2-0020 (100 µL size)
Concentration	0.2 mg/mL
Host Species	Chicken Polyclonal
Format	Affinity-Purified IgY
Buffer	Phosphate-buffered (10 mM) isotonic (0.9%, w/v) saline ("PBS," pH 7.2) with sodium azide (0.02%, w/v) added as a preservative.
Applications	ICC 1:100-1:500 IHC 1:100-1:500 WB 1:500-1:2000
Species Reactivity	Human, Mouse, and Rat
Immunogen	Synthetic peptide
Molecular Weight	130 kDa
Cite this Antibody	Aves Labs Cat# GOLGA2-0100 or Aves Labs Cat# GOLGA2-0020; RRID: AB_3105809

Images



Western blotting of various cell lysates with chicken anti-GOLGA2 (GM130) antibody (0.5 µg/ml) and detected with anti-chicken HRP. Chicken anti-GOLGA2 recognizes endogenous GOLGA2 in all the cell lysates at ~130 kDa.



Immunofluorescent staining of HeLa cells using 1 µg/mL chicken anti-GOLGA2 (GM130) (Cat No. GOLGA2-0100) antibody (green). Actin filaments were stained using Phalloidin (red). DAPI nuclear stain (blue) shows cell nuclei. The cells were mounted with Antibodies Incorporated Fluoroshield with DAPI mounting medium (Cat. No. AR-6501). Anti-GOLGA2 specifically stains the Golgi apparatus in HeLa cells.

Details

Target Description	GOLGA2, also known as GM130, is a Golgi matrix protein critical for the proper functioning and organization of the Golgi apparatus. Discovered in the mid-1990s, GOLGA2 is involved in the maintenance of Golgi structure and the facilitation of vesicle trafficking within the cell. This protein is pivotal in ensuring that proteins and lipids are correctly modified, sorted, and sent to their destined locations, which is essential for various cellular processes including secretion, plasma membrane repair, and lysosome function. GOLGA2's role in cellular homeostasis and its effect on the Golgi apparatus associates it with several neurodegenerative and congenital disorders. Mutations in the gene and dysfunction of the protein can lead to brain development delays, and diseases such as Parkinson's and ALS (Huang et al. 2021). Also, changes in GOLGA2 levels can affect Golgi structure and vesicle trafficking leading to aberrant cell proliferation, tumorigenesis and metastasis, making GOLGA2 a target of anti-cancer gene therapy (Chang et al. 2012).
Purification Method	Eggs from hens hyperimmunized with target were used to prepare an IgY fraction which was then subjected to antigen-specific affinity purification.
Quality Control Tests	Each new lot of this antibody is tested in WB to confirm that it recognizes a single immunoreactive band of expected molecular weight when used to probe HeLa lysate.
Storage	Store at 4°C in the dark. Under these conditions, the antibodies should have a shelf life of at least twelve months, provided they remain sterile. For longer term storage, aliquot and freeze to avoid freeze-thaw of the antibody.

Our Guarantee

As an original manufacturer, we are dedicated to creating quality and reproducible antibodies that further your research. We provide personalized customer support from the scientists that made the antibody and offer a free replacement or 100% refund if we cannot resolve an issue. Order today and experience how chickens make better antibodies.

Note: For research use only. Not intended for therapeutic or diagnostic use. Use of all products is subject to our terms and conditions, viewable on our website.