

Product Datasheet

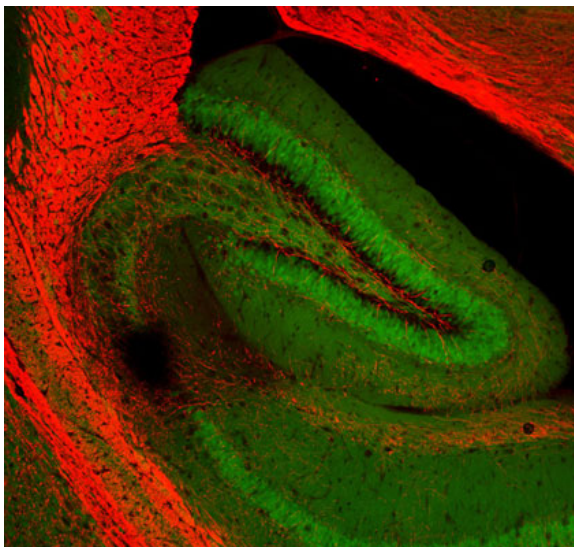
Chickens make *better* antibodies.

Anti-Myelin Basic Protein (MBP) Antibody

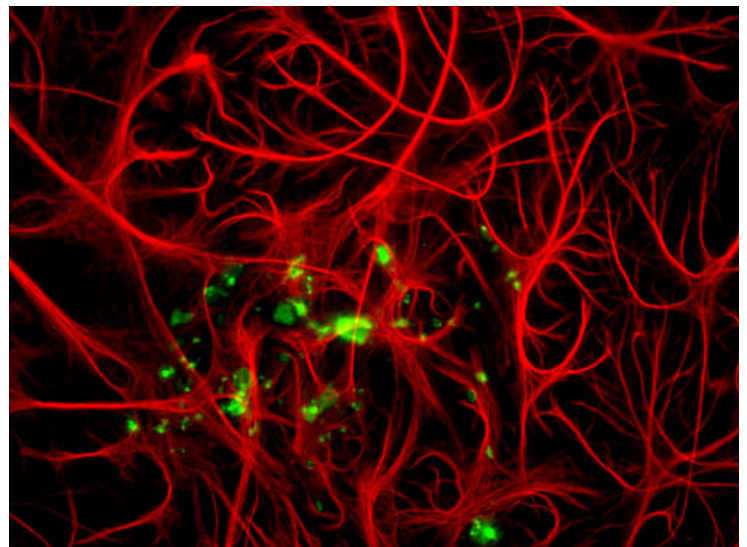
Overview

Catalog #	MBP (1000 μ L size) or MBP-0020 (100 μ L size)
Concentration	100 μ g/mL
Host Species	Chicken Polyclonal
Format	Affinity-Purified IgY
Buffer	Phosphate-buffered (10 mM) isotonic (0.9%, w/v) saline ("PBS," pH 7.2) with sodium azide (0.02%, w/v) added as a preservative.
Applications	IHC 1:1000-1:2000 ICC 1:1000-1:2000 WB 1:1000-1:2000
Species Reactivity	Human, Mouse, and Rat
Immunogen	Synthetic peptide
Molecular Weight	21, 18, 17, 14 kDa
Cite this Antibody	Aves Labs Cat# MBP, or Aves Labs Cat# MBP-0020; RRID: AB_2313550

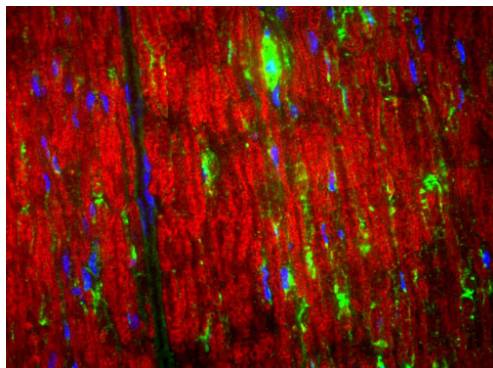
Images



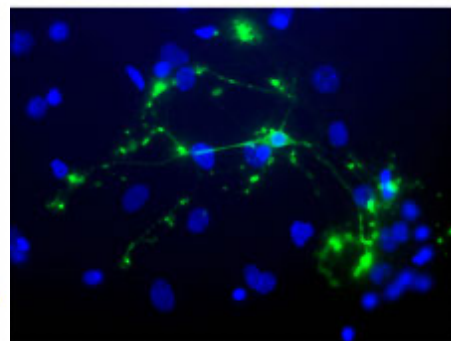
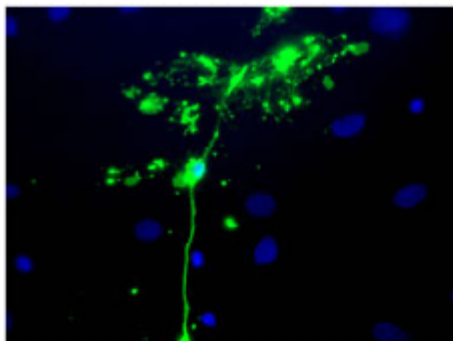
Immunohistochemical staining of MBP (RED) in the hippocampal region of a transgenic adult mouse brain. This particular transgenic mouse expresses low levels of GFP autofluorescence under control of an actin promoter region. The anti-MBP antibody (Aves Labs) was used at a 1:1000 dilution. Dr. Felix Eckenstein, University of Vermont.



Adult mouse cortical cultures were stained with chicken anti-MBP antibody (Aves Labs, green, 1:1000 dilution) and rabbit anti-GFAP antibody (EnCorBio, red; 1:1000 dilution). Photomicrograph courtesy of Dr. Gerry Shaw, Univ. Florida.



Immunohistochemical staining of the MBP (green) in the nodes of Ranvier of the sciatic nerve of an adult rat. Red counterstaining is a ubiquitous gene product. Blue shows DAPI nuclear staining. Photomicrograph courtesy of Dr. Gerry Shaw, Univ. Florida.



Chicken anti-Myelin Basic Protein (MBP) (green), with nuclei stained with Hoechst dye (blue).

Details

Target Description	Human Myelin Basic Protein (MBP) is a 20,115 dalton protein (186 amino acids) found in myelin of the CNS and PNS. Expressed as an intracellular protein by oligodendrocytes and Schwann cells, MBP aids in the compaction and stability of myelin.
Purification Method	Chickens were immunized with a synthetic peptide / keyhole limpet hemocyanin (KLH) conjugate. The peptide corresponded to a region of the MBP gene product shared between the human (NP_002376, NCBI) and mouse (NP_034907, NCBI) sequences. After repeated injections, immune eggs were collected, the IgY fractions were purified from the yolks, and then affinity-purified using a peptide column. The concentrations of the eluates were then adjusted to 100 µg/mL, and the preparation was filter-sterilized.
Quality Control Tests	Quality assurance analysis was performed using immunohistochemistry (at a dilution of 1:2000) using fluorescein-labeled goat anti-chicken IgY (1:500 dilution, Aves Labs Cat.# F-1005) as the secondary reagent.
Storage	Store at 4°C in the dark. Under these conditions, the antibodies should have a shelf life of at least twelve months, provided they remain sterile. For longer term storage, aliquot and freeze to avoid freeze-thaw of the antibody.

Our Guarantee

As an original manufacturer, we are dedicated to creating quality and reproducible antibodies that further your research. We provide personalized customer support from the scientists that made the antibody and offer a free replacement or 100% refund if we cannot resolve an issue. Order today and experience how chickens make better antibodies.

Note: For research use only. Not intended for therapeutic or diagnostic use. Use of all products is subject to our terms and conditions, viewable on our website.