

Product Datasheet

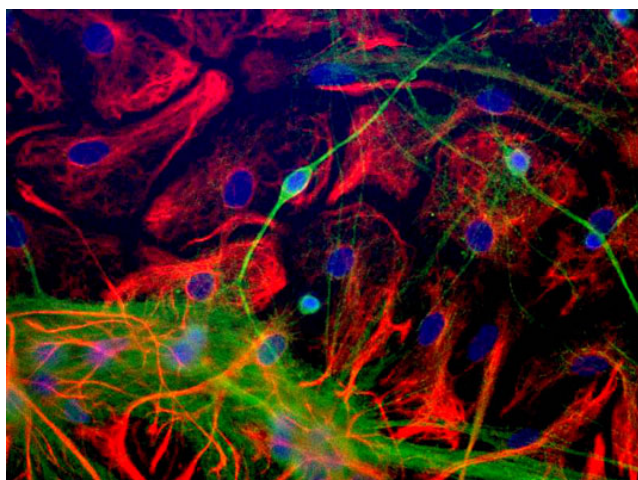
Chickens make *better* antibodies.

Anti-Neuron-Specific Enolase (NSE) Type 2 Antibody

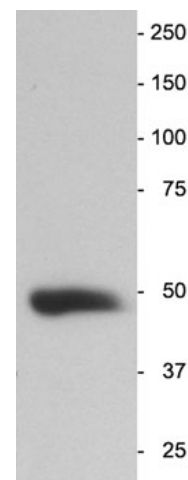
Overview

Catalog #	NSE
Concentration	200 µg/mL
Host Species	Chicken Polyclonal
Format	Affinity-Purified IgY
Buffer	Phosphate-buffered (10 mM) isotonic (0.9%, w/v) saline ("PBS," pH 7.2) with sodium azide (0.02%, w/v) added as a preservative.
Applications	IHC 1:10000-1:20000 ICC 1:10000-120000 WB 1:10000-1:20000
Species Reactivity	Human, Mouse, and Rat
Immunogen	Synthetic peptides
Molecular Weight	47 kDa
Cite this Antibody	Aves Labs Cat# NSE, RRID: AB_2313555

Images



Immunocytochemical staining of NSE (green, 1:1000 dilution) and Glial Fibrillary Acidic Protein (GFAP, rabbit, 1:1000 dilution). Photomicrograph by Dr. Gerry Shaw (EnCor Biotechnology).



Western blot of adult mouse brain homogenate showing a single band at the correct MW (47 kDa), dilution 1:100000.

Details

Target Description	Human NSE-2 (EC 4.2.1.11) is a 47,138 dalton protein (434 amino acids) expressed in neurons of the peripheral nervous system (PNS) and central nervous system (CNS). NSE-2 catalyzes the conversion of 2-phospho-D-glycerate into phosphoenol pyruvate and is an essential enzyme in energy metabolism in nervous tissues.
Purification Method	Chickens were immunized with two synthetic peptide / keyhole limpet hemocyanin (KLH) conjugates. These synthetic peptides corresponded to different regions of the NSE-2 gene product, but are shared between the human (NP_001966, NCBI) and rat (AAA41119, NCBI) sequences. After repeated injections into the hens, immune eggs were collected, and the IgY fractions were purified from the yolks. These IgY fractions were then affinity purified using a peptide column, and the concentrations of the eluates adjusted to 200 µg/mL. Finally, equal volumes of each of the three affinity-purified anti-peptide antibodies were mixed, and the preparation was filter-sterilized.
Quality Control Tests	Both of these anti-peptide antibodies were analyzed by immunohisto-chemistry (at a dilution of 1:5000) using fluorescein-labeled goat anti-chicken IgY (1:500 dilution, Aves Labs Cat.# F-1005) as the secondary reagent.
Storage	Store at 4°C in the dark. Under these conditions, the antibodies should have a shelf life of at least twelve months, provided they remain sterile. For longer term storage, aliquot and freeze to avoid freeze-thaw of the antibody.

Our Guarantee

As an original manufacturer, we are dedicated to creating quality and reproducible antibodies that further your research. We provide personalized customer support from the scientists that made the antibody and offer a free replacement or 100% refund if we cannot resolve an issue. Order today and experience how chickens make better antibodies.

Note: For research use only. Not intended for therapeutic or diagnostic use. Use of all products is subject to our terms and conditions, viewable on our website.