

Product Datasheet

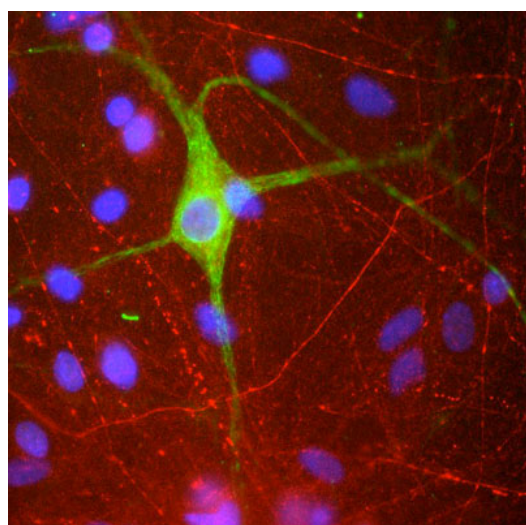
Chickens make *better* antibodies.

Anti-Peripherin Antibody

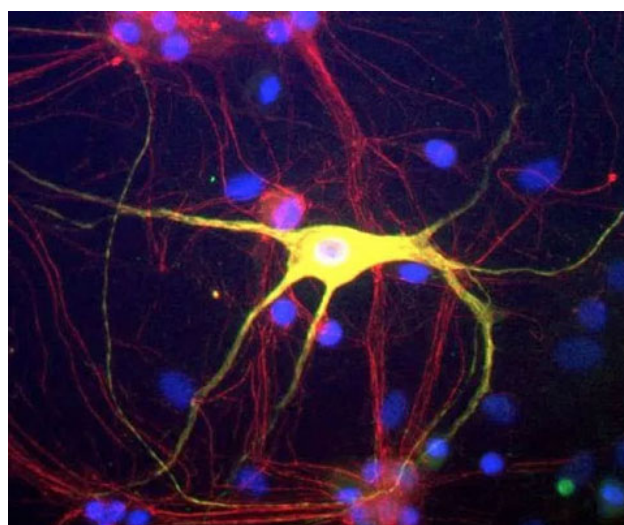
Overview

Catalog #	PER
Concentration	2 mg/mL
Host Species	Chicken Polyclonal
Format	IgY Fraction
Buffer	Phosphate-buffered (10 mM) isotonic (0.9%, w/v) saline ("PBS" pH 7.2) with bovine serum albumin (BSA, 0.5%) added to prevent absorption to the plastic and sodium azide (0.02%, w/v) added as a preservative
Applications	IHC 1:2000-1:5000 ICC 1:2000-1:5000 WB 1:2000-1:5000
Species Reactivity	Human, Mouse, and Rat
Immunogen	Recombinant rat peripherin expressed in <i>Escherichia coli</i>
Molecular Weight	60 kDa
Cite this Antibody	Aves Labs Cat# PER, RRID: AB_2313558

Images



Rat mixed neuron/glia cultures stained with anti-Peripherin (green) and rabbit anti α -interneixin (red). Nuclei are stained with DAPI (blue).



Rat mixed neuron/glia cultures stained with anti-Peripherin (green) and rabbit anti α -interneixin (red). Nuclei are stained with DAPI (blue).

Details

Target Description	Human Perpherin is a 53,651 dalton protein (470 amino acids) expressed in all PNS neurons and some CNS neurons, including a subset of cortical neurons, hippocampal neurons, and ventral horn spinal cord motor neurons. At an ultrastructural level, peripherin immunoreactivity is associated with the neurofilament portion of the cytoskeleton, being particularly abundant in the cell body. Peripherin protein has been shown to undergo upregulation during periods of trophic stress in cultured neurons, and mutations of the peripherin gene have been associated with the neurodegenerative disease amyotrophic lateral sclerosis.
Purification Method	Chickens were immunized with full-length recombinant peripherin protein. After repeated injections into the hens, immune eggs were collected, and the IgY fractions were purified from the yolks.
Quality Control Tests	Quality assurance analysis was performed using immunohistochemistry (at a dilution of 1:10000) using fluorescein-labeled goat anti-chicken IgY (1:500 dilution, Aves Labs Cat.# F-1005) as the secondary reagent.
Storage	Store at 4°C in the dark. Under these conditions, the antibodies should have a shelf life of at least twelve months, provided they remain sterile. For longer term storage, aliquot and freeze to avoid freeze-thaw of the antibody.

Our Guarantee

As an original manufacturer, we are dedicated to creating quality and reproducible antibodies that further your research. We provide personalized customer support from the scientists that made the antibody and offer a free replacement or 100% refund if we cannot resolve an issue. Order today and experience how chickens make better antibodies.

Note: For research use only. Not intended for therapeutic or diagnostic use. Use of all products is subject to our terms and conditions, viewable on our website.