

Product Datasheet

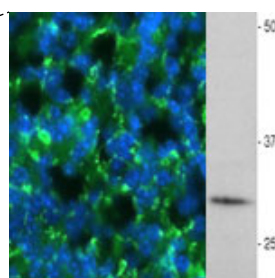
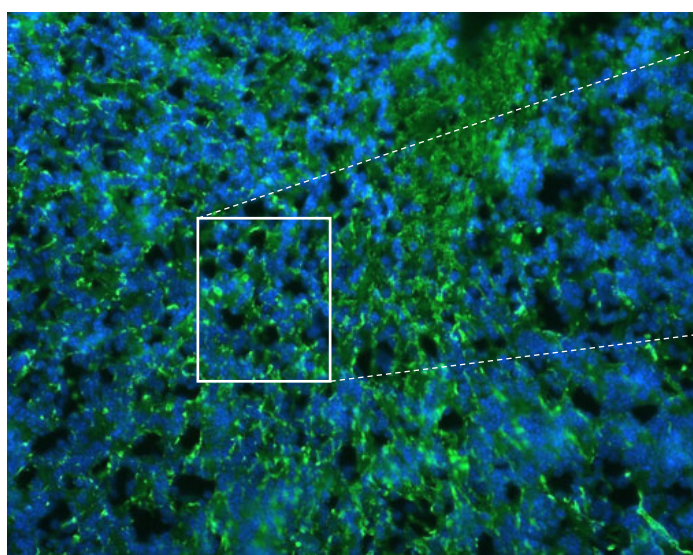
Chickens make *better* antibodies.

Anti-Proteolipid Protein (PLP) Antibody

Overview

Catalog #	PLP
Concentration	100 µg/mL
Host Species	Chicken Polyclonal
Format	Affinity-Purified IgY
Buffer	Phosphate-buffered (10 mM) isotonic (0.9%, w/v) saline ("PBS," pH 7.2) with sodium azide (0.02%, w/v) added as a preservative.
Applications	IHC 1:2000-1:5000 ICC 1:2000-1:5000 WB 1:2000-1:5000
Species Reactivity	Human, Mouse, and Rat
Immunogen	Synthetic peptide
Molecular Weight	30 kDa
Cite this Antibody	Aves Labs Cat# PLP, RRID: AB_2313560

Images



Immunohistochemistry photomicrograph of PLP immunoreactivity (green; 1:1000 dilution) in a cryostat section of an embryonic (e18) mouse brain. Blue is DAPI nuclear counterstain. Western blot shows a single band in adult mouse brain lysate, 27 ug loaded, 10% gel. Hoda Ilias, Aves Labs.

Details

Target Description	Human Proteolipid Protein (PLP, or lipophilin) is a 29,946 dalton protein (277 amino acids) found in myelin of the CNS and PNS. Expressed by oligodendrocytes and Schwann cells, PLP stabilizes myelin by preventing lipid bilayer fusion, and aids in its compaction. Different mutations of the human PLP gene product result in two neurological disorders: Pelizaeus-Merzbacher Disease and Spastic Paraplegia Type 2.
Purification Method	Chickens were immunized with a synthetic peptide-keyhole limpet hemocyanin (KLH) conjugate. This synthetic peptide corresponded to the PLP gene product shared between the mouse (P60202) and human (NP_000524) gene products. After repeated injections into the hens, immune eggs were collected, and the IgY fractions were purified from the yolks. These IgY fractions were then affinity purified using a peptide column, the concentrations of the eluate adjusted to 100 µg/mL, and the preparation filter-sterilized.
Quality Control Tests	Each of the three antibodies were analyzed by immunohistochemistry (at a dilution of 1:2000) using fluorescein-labeled goat anti-chicken IgY (1:500 dilution, Aves Labs Cat.# F-1005) as the secondary reagent.
Storage	Store at 4°C in the dark. Under these conditions, the antibodies should have a shelf life of at least twelve months, provided they remain sterile. For longer term storage, aliquot and freeze to avoid freeze-thaw of the antibody.

Our Guarantee

As an original manufacturer, we are dedicated to creating quality and reproducible antibodies that further your research. We provide personalized customer support from the scientists that made the antibody and offer a free replacement or 100% refund if we cannot resolve an issue. Order today and experience how chickens make better antibodies.

Note: For research use only. Not intended for therapeutic or diagnostic use. Use of all products is subject to our terms and conditions, viewable on our website.