

## Product Datasheet

Chickens make *better* antibodies.

# Anti-Tau Antibody

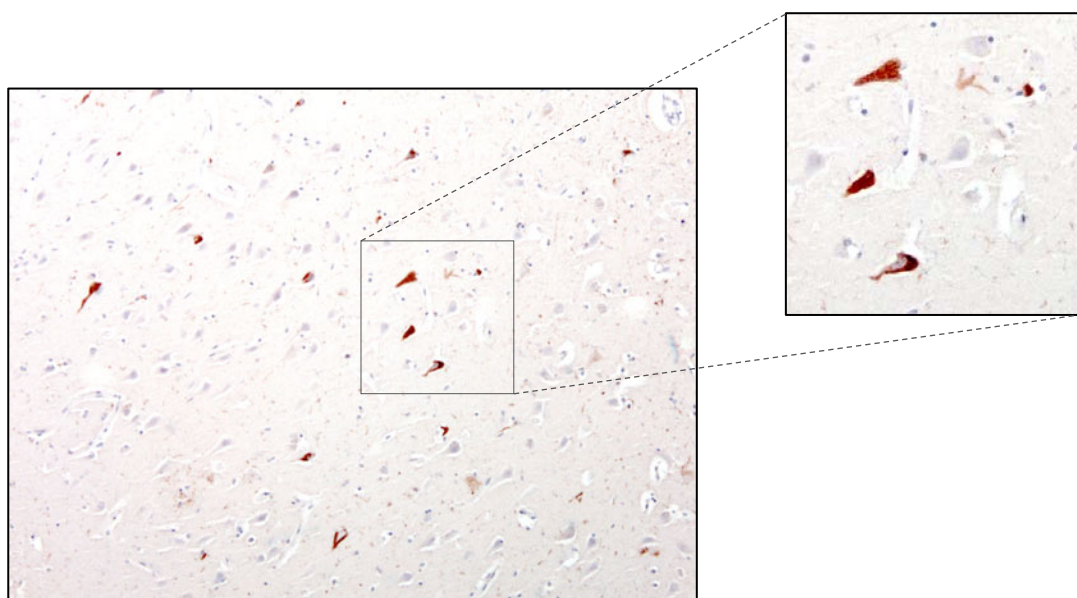
## Overview

---

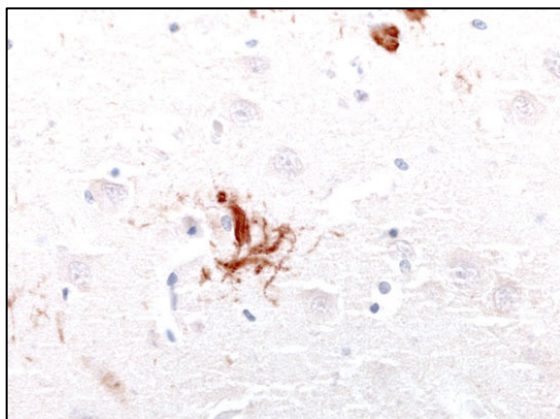
|                           |  |
|---------------------------|--|
| <b>Catalog #</b>          | TAU  |
| <b>Concentration</b>      | 200 µg/mL  |
| <b>Host Species</b>       | Chicken Polyclonal   |
| <b>Format</b>             | Affinity-Purified IgY  |
| <b>Buffer</b>             | Phosphate-buffered (10 mM) isotonic (0.9%, w/v) saline ("PBS," pH 7.2) with sodium azide (0.02%, w/v) added as a preservative. |
| <b>Applications</b>       | IHC 1:5000-1:10000 ICC 1:5000-1:10000  |
| <b>Species Reactivity</b> | Human, Mouse, and Rat  |
| <b>Immunogen</b>          | Synthetic peptides   |
| <b>Molecular Weight</b>   | 55-62 kDa  |
| <b>Cite this Antibody</b> | Aves Labs Cat# TAU, RRID: AB_2313563   |

## Images

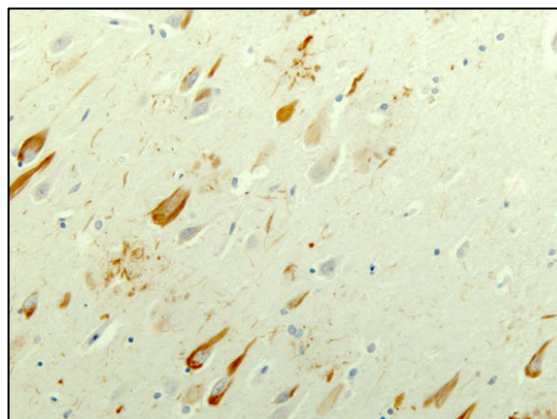
---



Immunohistochemical presence of tau in neurofibrillary tangles in cortical neurons of an Alzheimer's Disease patient. Anti-Tau antibody (1:10,000) was incubated with formalin-fixed, paraffin-embedded sectioned material from Alzheimer's brains. Primary antibody was visualized with HRP-labeled goat anti-chicken IgY. Dr. Randy Woltjer, Oregon Health & Sciences University.



Immunohistochemical presence of tau in a neurofibrillary tangle in the remnant of a cortical neuron of an Alzheimer's Disease patient. Anti-Tau antibody (1:10,000) was incubated with formalin-fixed, paraffin-embedded sectioned material from Alzheimer's brains. Primary antibody was visualized with HRP-labeled goat anti-chicken IgY. Dr. Randy Woltjer, Oregon Health & Sciences University.



Immunohistochemical presence of tau in a neurofibrillary tangle in cortical neurons of an Alzheimer's Disease patient. Anti-Tau antibody (1:10,000) was incubated with formalin-fixed, paraffin-embedded sectioned material from Alzheimer's brains. Primary antibody was visualized with HRP-labeled goat anti-chicken IgY. Dr. Randy Woltjer, Oregon Health & Sciences University.

## Details

---

### Target Description

Human Tau protein (i.e., microtubule-associated protein tau isoform 1) is a 78,902 dalton protein (758 amino acids) expressed in cortical neurons of the CNS. In normal individuals, tau contains moderate degrees of phosphorylation on various serine and threonine residues scattered throughout the N-terminal half of this protein. However in various neurodegenerative diseases, such as Alzheimer's disease, Tau becomes hyperphosphorylated on these residues, leading to the pathological formation of intracellular "neurofibrillary tangles." Such tangles are hallmarks of Alzheimer's disease, as well as various other neurodegenerative diseases, collectively known as the "tauopathies."

### Purification Method

Chickens were immunized with two synthetic peptide / keyhole limpet hemocyanin (KLH) conjugates. These synthetic peptides corresponded to different and nonphosphorylated regions of the Tau gene product, but are shared between the human (NP\_05819, NCBI) and mouse (P01637, NCBI) sequences. After repeated injections, immune eggs were collected, and the IgY fractions were purified from the yolks. These IgY fractions were then affinity purified using a peptide column, and the concentrations of the eluates adjusted to 200 µg/mL. Finally, equal volumes of both of these affinity-purified anti-peptide antibodies were mixed, and the preparation was filter-sterilized.

### Quality Control Tests

Both of these anti-peptide antibodies were analyzed by immunohisto-chemistry (at a dilution of 1:20000) using fluorescein-labeled goat anti-chicken IgY (1:500 dilution, Aves Labs Cat.# F-1005) as the secondary reagent.

### Storage

Store at 4°C in the dark. Under these conditions, the antibodies should have a shelf life of at least twelve months, provided they remain sterile. For longer term storage, aliquot and freeze to avoid freeze-thaw of the antibody.

## Our Guarantee

---

As an original manufacturer, we are dedicated to creating quality and reproducible antibodies that further your research. We provide personalized customer support from the scientists that made the antibody and offer a free replacement or 100% refund if we cannot resolve an issue. Order today and experience how chickens make better antibodies.

**Note:** For research use only. Not intended for therapeutic or diagnostic use. Use of all products is subject to our terms and conditions, viewable on our website.