

Anti-Human CD10 Purified

Catalog Number :02221-20

RUO: For Research Use Only. Not for use in diagnostic procedures.

Product Information

Clone: HI10a

Format/Conjugate: Purified

Concentration: 0.5 mg/mL

Reactivity: Human

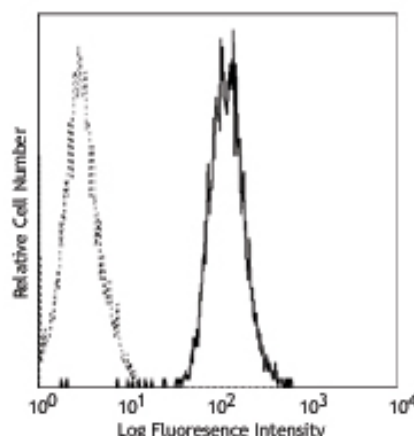
Laser: Not Applicable

Peak Emission: Not Applicable

Peak Excitation: Not Applicable

Filter: Not Applicable

Brightness (1=dim,5=brightest): Not Applicable



Human pre-B Nalm-6 cells were stained with purified HI10a and detected with FITC anti-mouse IgG. Relevant isotype control in dashed region.

Isotype: Mouse IgG1, kappa

Formulation: Phosphate-buffered aqueous solution, ≤0.09% Sodium azide, may contain carrier protein/stabilizer, pH7.2.

Storage: Product should be kept at 2-8°C.

Applications: FC, IHC

Description

The HI10a monoclonal antibody specifically reacts with human CD10, a 100kDA type II glycoprotein also known as common acute lymphoblastic leukemia antigen (CALLA), enkephalinase, and neprilysin. CD10 is expressed on neutrophils and the precursors of B and T cells. It is involved in the neutrophil inflammatory and chemotactic responses and B cell development.

Preparation & Storage

The product should be stored undiluted at 4°C and should be protected from prolonged exposure to light. Do not freeze. The monoclonal antibody was purified utilizing affinity chromatography and unreacted dye was removed from the product.

Application Notes

The antibody has been analyzed for quality through the flow cytometric analysis of the relevant cell type. It is recommended that the reagent be titrated for optimal performance for each application.

References

1. Leucocyte typing IV: white cell differentiation antigens. Oxford University Press, 1989.2406.
2. Letarte, M. I. C. H. E. L. L. E., Vera, S., Tran, R. O. S. E. T. T. E., Addis, J. B., Onizuka, R. J., Quackenbush, E. J., ... McInnes, R. R. (1988). Common acute lymphocytic leukemia antigen is identical to neutral endopeptidase.;The Journal of experimental medicine.;168(4), 1247-1253.
3. Bellido, M., Rubiol, E., Ubeda, J., Lopez, O., Estivill, C., Carnicer, M. J., ... Nomdedeu, J. (2001). Flow cytometry using the monoclonal antibody CD10-Pe/Cy5 is a useful tool to identify follicular lymphoma cells.;European journal of haematology.;66(2), 100-106.