

anti- G-CSFR antibody

Product Information

Catalog No.:	CAF50130
Size:	100µg
Form:	liquid
Purification:	Immunogen affinity purified
Purity:	≥95% as determined by SDS-PAGE
Host:	Rabbit
Clonality:	polyclonal
Clone ID:	None
IsoType:	IgG
Storage:	PBS with 0.02% sodium azide and 50% glycerol pH 7.3, -20°C for 12 months (Avoid repeated freeze / thaw cycles.)

Background

None

Immunogen information

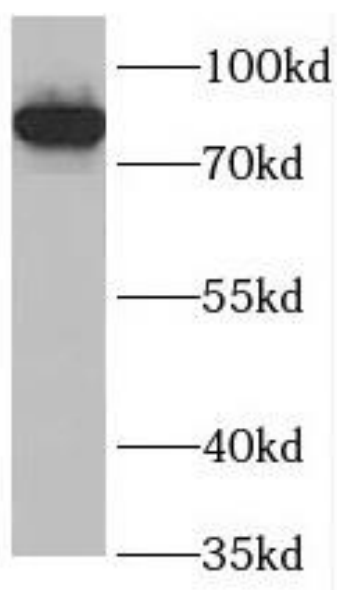
Immunogen:	colony stimulating factor 3 receptor(granulocyte)
Synonyms:	None
Observed MW:	85 kDa
Uniprot ID :	Q99062

Application

Reactivity:	Human
Tested Application:	ELISA, WB
Recommended dilution:WB:	1:500-1:2000
Image:	

This Antibody is for Research Use Only. Not for Diagnostic Procedures.

This is a sample Antibody manual only. Always refer to the hard copy manual included in the Antibody for your experiment.



human placenta tissue were subjected to SDS
PAGE followed by western blot with
CAF50130(G-CSFR antibody) at dilution of 1:300

ONLY

SAMPLE

This Antibody is for Research Use Only. Not for Diagnostic Procedures.

This is a sample Antibody manual only. Always refer to the hard copy manual included in the Antibody for your experiment.