

**CAU29483**

**Monoclonal Antibody to Enolase, Neuron Specific (NSE)**

**Organism Species: Homo sapiens (Human)**

***Instruction manual***

FOR IN VITRO USE AND RESEARCH USE ONLY

NOT FOR USE IN CLINICAL DIAGNOSTIC PROCEDURES

---

---

11th Edition (Revised in May, 2016)

**[ PROPERTIES ]**

**Source:** Monoclonal antibody preparation

**Host:** Mouse

**Antibody isotype:** IgG1 Kappa

**Purification:** Protein A/G Affinity Chromatography.

**Clone number:** A4

**Traits:** Liquid

**Concentration:** 500µg/mL

**UOM:** 200µg

**Applications:** WB; ICC; IHC-P; IHC-F; ELISA; IP; IF; FCM.

**[ IMMUNOGEN ]**

**Immunogen:** RPA537Hu01-Recombinant Enolase, Neuron Specific (NSE)

**[ APPLICATIONS ]**

Western blotting: 0.5-5ug/ml

Immunocytochemistry in formalin fixed cells: 5-30ug/ml

Immunohistochemistry in formalin fixed frozen section: 5-30ug/ml

Immunohistochemistry in paraffin section: 5-30ug/ml

Enzyme-linked Immunosorbent Assay: 0.05-2ug/ml

Optimal working dilutions must be determined by end user.

**[ FORMULATION ]**

**Form & Buffer:** Supplied as solution form in PBS, pH7.4, containing 0.02%NaN<sub>3</sub>,

**#1 Source for BioReagents, ELISA Kits and Custom Gene, Peptide, Protein & Antibody Services**



50% glycerol.

**Biomatik**

Tel: (519) 489-7195, (800) 836-8089

Fax: (519) 231-0140, (877) 221-3515

Email: [info@biomatik.com](mailto:info@biomatik.com)

<http://www.biomatik.com>

**#1 Source for BioReagents, ELISA Kits and Custom Gene, Peptide, Protein & Antibody  
Services**

## [ QUALITY CONTROL ]

**Content:** The quality control contains recombinant NSE disposed in loading buffer.

**Usage:** 10uL per well when 3,3'-Diaminobenzidine (DAB) as the substrate.  
5u L per well when used in enhanced chemilumescence (ECL).

**Note:** The quality control is specifically manufactured as the positive control. Not used for other purposes.

**Loading Buffer:** 100mM Tris(pH6.8), 1% SDS, 150mM NaCl, 50% glycerol, 0.02% BPB, 50mM DTT and 0.02% NaN<sub>3</sub>.

## [ STORAGE AND STABILITY ]

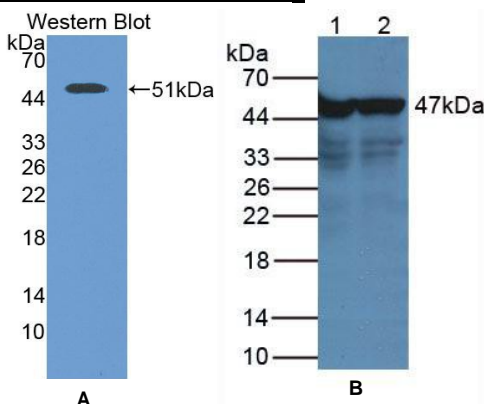
**Storage:** Avoid repeated freeze/thaw cycles.

Store at 4°C for frequent use.

Aliquot and store at -20°C for 12 months.

**Stability Test:** The thermal stability is described by the loss rate. The loss rate was determined by accelerated thermal degradation test, that is, incubate the protein at 37°C for 48h, and no obvious degradation and precipitation were observed. The loss rate is less than 5% within the expiration date under appropriate storage condition.

## [ IDENTIFICATION ]



**Figure 1. Western Blot**

**A. Sample:** Recombinant NSE, Human

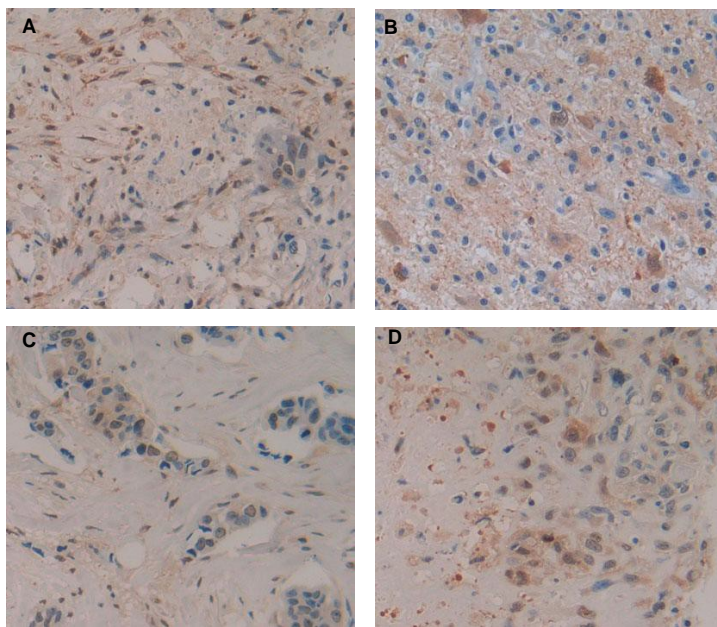
**B. Lane1:** Human Hepg2 Cells

**Lane2:** Human Hela Cells

**Primary Ab:** 2µg/mL Rabbit Anti-Human NSEAb

**Second Ab:** 1:5000 Dilution of HRP-Linked Rabbit

**Anti-Mouse IgG Ab (Catalog: SAA544Mu09)**



**Figure 2. DAB staining on  
IHC-P**

**Samples:**

- A. Human Pancreas Cancer  
Tissue**
- B. Human Glioma Tissue**
- C. Human Breast Cancer Tissue**
- D. Human Lung Cancer Tissue**