

Anti-BRCA1 (Ab-1524) Antibody

Catalog Number: A00005-1

About BRCA1

The BRCA1-BARD1 heterodimer coordinates a diverse range of cellular pathways such as DNA damage repair, ubiquitination and transcriptional regulation to maintain genomic stability. Acts by mediating ubiquitin E3 ligase activity that is required for its tumor suppressor function. Plays a central role in DNA repair by facilitating cellular response to DNA repair. Required for appropriate cell cycle arrests after ionizing irradiation in both the S-phase and the G2 phase of the cell cycle. Involved in transcriptional regulation of P21 in response to DNA damage. Required for FANCD2 targeting to sites of DNA damage. May function as a transcriptional regulator. Inhibits lipid synthesis by binding to inactive phosphorylated ACACA and preventing its dephosphorylation

Lin SY, et al. (2004) Proc Natl Acad Sci U S A, 101(17): 6484-6489

Zhang J, et al. (2004) Mol Cell Biol; 24(2): 708-718

Beger C, et al. (2001) Proc Natl Acad Sci U S A; 98(1): 130-135

Gardner K, et al. (2001) Breast Cancer Res; 3(1): 11-13

Zheng L, et al. (2001) Proc Natl Acad Sci U S A; 98(17): 9587-9592

Overview

Product Name	Anti-BRCA1 (Ab-1524) Antibody
Reactive Species	Human
Description	Boster Bio Anti-BRCA1 (Ab-1524) Antibody (Catalog # A00005-1). Tested in WB, IF applications. This antibody reacts with Human.
Conjugate	DyLight®488
Application	IF, WB
Clonality	Polyclonal 6G1
Formulation	Supplied at 1.0mg/mL in phosphate buffered saline (without Mg ²⁺ and Ca ²⁺), pH 7.4, 150mM NaCl, 0.02% sodium azide and 50% glycerol.
Storage Instructions	Store at -20°C for one year. For short term storage and frequent use, store at 4°C for up to one month. Avoid repeated freeze-thaw cycles.
Host	Rabbit
Uniprot ID	P38398

Technical Details

Immunogen	Peptide sequence around aa.1522~1526 (Y-P-S-Q-E) derived from Human BRCA1.
Predicted Reactive Species	Human

Cross Reactivity	No cross-reactivity with other proteins.
Isotype	IgG
Form	Liquid
Concentration	1 mg/ml
Purification	Antibodies were produced by immunizing rabbits with synthetic peptide and KLH conjugates. Antibodies were purified by affinity-chromatography using epitope-specific peptide.
Suggested Dilutions	<p>Dilute the sample so that the expected range of concentrations fall within the detection range of this kit.</p> <p>If the expected range of concentration is unknown, a pilot test should be conducted to decide the optimal dilution ratio for your samples.</p> <p>Some PubMed article(s) citing the expression level of this target are as follows:</p> <p>Boster Bio's internal QC testing used:</p> <p>Predicted MW: 220kd</p> <p>Western blotting: 1:500~1:1000</p> <p>Immunofluorescence: 1:100~1:200</p>

Anti-BRCA1 (Ab-1524) Antibody (A00005-1) Images

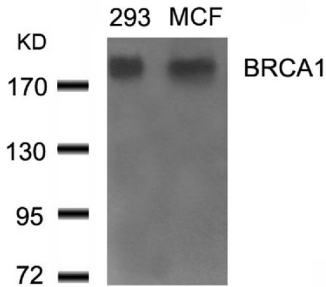
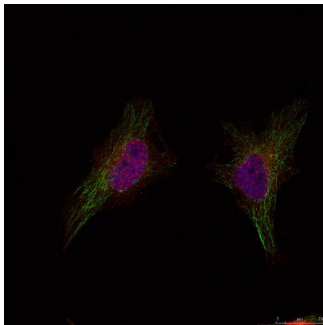


Figure 1. Western blot analysis of BRCA1 using anti-BRCA1 antibody (A00005-1). Electrophoresis was performed on a 5-20% SDS-PAGE gel at 70V (Stacking gel) / 90V (Resolving gel) for 2-3 hours. The sample well of each lane was loaded with 50ug of sample under reducing conditions. After Electrophoresis, proteins were transferred to a Nitrocellulose membrane at 150mA for 50-90 minutes. Blocked the membrane with 5% Non-fat Milk/ TBS for 1.5 hour at RT. The membrane was incubated with rabbit anti-BRCA1 antigen affinity purified polyclonal antibody (Catalog # A00005-1) at 0.5 ug/mL overnight at 4°C, then washed with TBS-0.1%Tween 3 times with 5 minutes each and probed with a goat anti-Rabbit IgG-HRP secondary antibody at a dilution of 1:10000 for 1.5 hour at RT. The signal is developed using an Enhanced Chemiluminescent detection (ECL) kit (Catalog # SA1022) with Tanon 5200 system. A specific band was detected for BRCA1.



Immunofluorescence staining of methanol-fixed HeLa cells using BRCA1(Ab-1524) Antibody #A00005-1.

1 Publications Citing This Product

1. PubMed ID: 23276146, Zhang Q, Zhang Q, Cong H, Zhang X. Diagn Pathol. 2012 Dec 31;7:181. Doi: 10.1186/1746-1596-7-181. The Ectopic Expression Of Brca1 Is Associated With Genesis, Progression, And Prognosis Of Breast Cancer In Young Patients.

Visit bosterbio.com/anti-brca1-ab-1524-antibody-a00005-1-boster.html to see all 1 publications.

Submit a product review to Biocompare.com

Submit a review of this product to Biocompare.com to receive a \$20 Amazon.com giftcard! Your reviews help your fellow scientists make the right decisions. Thank you for your contribution.



Anti-BRCA1 (Ab-1524) Antibody