

Anti-APOLIPOPROTEINE APOE Antibody

Catalog Number: A00015

Introduction

CD3epsilon is a 20kD chain, which together with CD3lambda, CD3delta, and CD3zeta, and a T cell receptor (alpha/beta or gamma/delta) form the CD3/T-cell receptor complex. It is a specific marker for T lymphocytes, NK T cells, and some thymocytes. Crosslinking of TCR initiates an intracellular signaling cascade resulting in cellular activation and proliferation. The OKT3 antibody has been reported to have potent immunosuppressive properties in vivo and has been proved effective in the treatment of renal, heart, and liver allograft rejection.

This antibody is routinely tested by flow cytometric analysis. Flow cytometry and other applications were tested during antibody development or are reported in the literature.

Application Information

Each lot of this antibody has been quality control tested by flow cytometric analysis of human PBMCs. For flow cytometric staining, the recommended use of this antibody is $\leq 0.5\mu\text{g}$ per 1×10^6 cells in $100\mu\text{l}$ of staining volume followed by a secondary fluorescent conjugated anti-mouse antibody. However, it is strongly suggested that the antibody reactivity be empirically titrated for optimal performance in the application of interest.

About APOE

Anti Apolipoprotein E Antibody recognizes the gene product of APOE. Apolipoprotein E is found in the chylomicron and IDLs that binds to a specific receptor on liver cells and peripheral cells. Apolipoprotein E is essential for the normal catabolism of triglyceride-rich lipoprotein constituents. This antibody is suitable for cardiovascular research.

Overview

Product Name	Anti-APOLIPOPROTEINE APOE Antibody
Reactive Species	Human, Rat
Description	Boster Bio Anti-APOLIPOPROTEINE APOE Antibody (Catalog # A00015). Tested in WB applications. This antibody reacts with Human, Rat.
Conjugate	Biotin
Application	WB
Clonality	Polyclonal EM-11
Formulation	0.125 M Sodium Borate, 0.075 M Sodium Chloride, 0.005 M EDTA, pH 8.0, 0.01% (w/v) Sodium Azide
Storage Instructions	Store vial at 4°C prior to opening. This product is stable at 4°C as an undiluted liquid. Dilute only prior to immediate use. For extended storage, mix with an equal volume of glycerol, aliquot contents and freeze at -20°C or below. Avoid cycles of freezing and thawing. Expiration date is one (1) year from date of opening. (Ship on dry ice.)

Host	Goat
Uniprot ID	P02649

Technical Details

Immunogen	Apolipoprotein Type E was isolated from human plasma by density gradient centrifugation followed by HPLC purification.
Predicted Reactive Species	Mouse, Rat
Cross Reactivity	beta-Actin antibody is human, mouse, rat, rabbit, chicken, zebrafish and drosophila reactive.
Isotype	IgG
Form	Liquid (sterile filtered)
Concentration	1.0 mg/mL by UV absorbance at 280 nm
Purification	Anti-Apolipoprotein E has been prepared by immunoaffinity chromatography using immobilized antigens followed by extensive cross-adsorption against other apoLipoproteins and human serum proteins to remove any unwanted specificities. Typically less than 1% cross-reactivity against other types of apoLipoprotein was detected by ELISA against purified standards. This antibody reacts with human apoLipoprotein E and has negligible cross-reactivity with Type A-1 A-II, B, C-I, C-II, C-III and J apoLipoproteins. Specific cross-reaction of anti-apoLipoprotein antibodies with antigens from other species has not been determined. Non-specific cross-reaction of anti-apoLipoprotein antibodies with other human serum proteins is negligible.
Suggested Dilutions	<p>Dilute the sample so that the expected range of concentrations fall within the detection range of this kit.</p> <p>If the expected range of concentration is unknown, a pilot test should be conducted to decide the optimal dilution ratio for your samples.</p> <p>Some PubMed article(s) citing the expression level of this target are as follows:</p> <p>Boster Bio's internal QC testing used:</p> <p>ELISA: 1:4,000 - 1:8,000</p> <p>IHC: 1:50 - 1:200</p> <p>IP: 1:100</p> <p>WB: 1:500 - 1:2,000</p>

Anti-APOLIPOPROTEINE APOE Antibody (A00015) Images

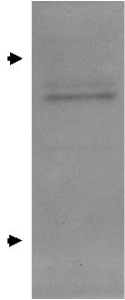


Figure 1. Western blot analysis of APOE using anti-APOE antibody (A00015).

Electrophoresis was performed on a 5-20% SDS-PAGE gel at 70V (Stacking gel) / 90V (Resolving gel) for 2-3 hours. The sample well of each lane was loaded with 50ug of sample under reducing conditions.

After Electrophoresis, proteins were transferred to a Nitrocellulose membrane at 150mA for 50-90 minutes. Blocked the membrane with 5% Non-fat Milk/ TBS for 1.5 hour at RT. The membrane was incubated with rabbit anti-APOE antigen affinity purified polyclonal antibody (Catalog # A00015) at 0.5 ug/mL overnight at 4°C, then washed with TBS-0.1%Tween 3 times with 5 minutes each and probed with a Rabbit anti-Goat IgG-HRP secondary antibody at a dilution of 1:10000 for 1.5 hour at RT. The signal is developed using an Enhanced Chemiluminescent detection (ECL) kit (Catalog # SA1023) with Tanon 5200 system. A specific band was detected for APOE.

1 Publications Citing This Product

1. PubMed ID: 33061590, Xue Y,Huang S,Huang J,Li S,Zhang C,Zhou X.Identification of Apolipoprotein E as a Potential Diagnostic Biomarker of Nasopharyngeal Carcinoma.Cancer Manag Res.2020 Sep 24;12:8943-8950.doi:10.2147/CMAR. S239479.PMID:33061590;PMCID:PMC7522425.

Visit bosterbio.com/anti-apolipoproteine-antibody-a00015-boster.html to see all 1 publications.

Submit a product review to Biocompare.com

Submit a review of this product to Biocompare.com to receive a \$20 Amazon.com giftcard! Your reviews help your fellow scientists make the right decisions. Thank you for your contribution.



Anti-APOLIPOPROTEINE APOE Antibody