

Anti-NOD2 (Card15) Antibody

Catalog Number: A00087

About NOD2

ARHGAP22 is a Rho GTPase-activating protein involved in the signal transduction pathway that regulates endothelial cell capillary tube formation during angiogenesis. It acts as a GTPase activator for RAC1 by converting it to an inactive GDP-bound state and also inhibits RAC1-dependent lamellipodia formation. It may also play a role in transcription regulation via its interaction with VEZF1, by regulating activity of the endothelin-1 (EDN1) promoter. Anti-ARHGAP22 [p Ser22] antibody is ideal for researchers interested in Diabetes Research, Lipid and Metabolism research.

Overview

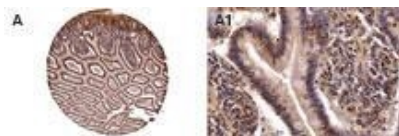
Product Name	Anti-NOD2 (Card15) Antibody
Reactive Species	Human
Description	Boster Bio Anti-NOD2 (Card15) Antibody (Catalog# A00087). Tested in WB, IHC, IP application(s). This antibody reacts with Human.
Conjugate	Biotin
Application	IP, IHC, WB
Clonality	Polyclonal
Formulation	50 ul sera
Storage Instructions	Store the antibody at 4°C, stable for 6 months. For long-term storage, store at -20°C. Avoid repeated freeze and thaw cycles.
Host	Rabbit
Uniprot ID	Q9HC29

Technical Details

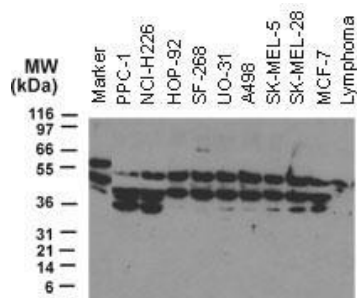
Immunogen	A synthetic peptide of human NOD2/CARD15 (amino acids 582-600 LGFLVRAKGVVPGSTAPLE)
Predicted Reactive Species	Mouse, Rat
Cross Reactivity	(ELISA)Recombinant canine CCL3 Weak (ELISA)Recombinant equine CCL3 None (ELISA)Recombinant mouse CCL3 None (ELISA)Recombinant rabbit CCL3 None
Isotype	Rabbit IgG
Form	Liquid

Concentration	0.5-1mg/ml, actual concentration vary by lot. Use suggested dilution ratio to decide dilution procedure.
Purification	Whole serum
Suggested Dilutions	<p>Dilute the sample so that the expected range of concentrations fall within the detection range of this kit.</p> <p>If the expected range of concentration is unknown, a pilot test should be conducted to decide the optimal dilution ratio for your samples.</p> <p>Some PubMed article(s) citing the expression level of this target are as follows:</p> <p>Boster Bio's internal QC testing used:</p> <p>WB: 1:1000-1:2000</p> <p>IHC (paraffin): 1:1000-1:5000</p> <p>IHC (frozen): Users should optimize</p> <p>IP: 1:50-1:200</p>

Anti-NOD2 (Card15) Antibody (A00087) Images



Formalin-fixed, paraffin-embedded normal human colon stained for NOD2 expression using primary antibody dilution ratio of 1:2000. A, tissue core from a colon tissue microarray. A1, high magnification of A. Hematoxylin-eosin counterstain.



Western blot analysis of NOD2 using primary antibody dilution ratio of 1:2000. 30 ug total protein was loaded per lane. Samples from human tumor cell lines: PPC-1 (prostate carcinoma), NCI-H226 and NCI-H332M (lung carcinoma), SF-268 (glioblastoma), UO-31 and A498 (renal/kidney carcinoma), SK-MEL-5 and SK-MEL-28 (melanoma), and MCF-7 (breast carcinoma). Lymphoma is from a cell line generated from a tumor growing in nude mice following injection of primary human lymphoma cells.

Submit a product review to Biocompare.com

Submit a review of this product to Biocompare.com to receive a \$20 Amazon.com giftcard! Your reviews help your fellow scientists make the right decisions. Thank you for your contribution.



Anti-NOD2 (Card15) Antibody