

Anti-FLT3(Ab-591) Antibody

Catalog Number: A00188

About FLT3

FLT3 encodes a class III receptor tyrosine kinase that regulates hematopoiesis. The receptor consists of an extracellular domain composed of five immunoglobulin-like domains, one transmembrane region, and a cytoplasmic kinase domain split into two parts by a kinase-insert domain. The receptor is activated by binding of the fms-related tyrosine kinase 3 ligand to the extracellular domain, which induces homodimer formation in the plasma membrane leading to autophosphorylation of the receptor. The activated receptor kinase subsequently phosphorylates and activates multiple cytoplasmic effector molecules in pathways involved in apoptosis, proliferation, and differentiation of hematopoietic cells in bone marrow. Mutations that result in the constitutive activation of this receptor result in acute myeloid leukemia and acute lymphoblastic leukemia.

Sekine S et.al. (2008) J Immunol. ;180(12):8126-34

Pratz K et.al. (2008) Leuk Lymphoma. 2008 ;49(5):852-63.

Al Shaer L et.al. (2008) Br J Haematol. 141(4):483-93.

Overview

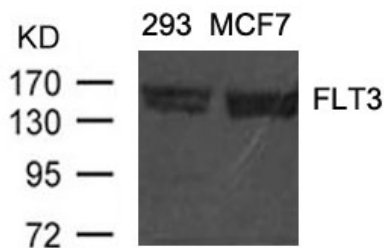
Product Name	Anti-FLT3(Ab-591) Antibody
Reactive Species	Human
Description	Boster Bio Anti-FLT3(Ab-591) Antibody (Catalog # A00188). Tested in WB, IF applications. This antibody reacts with Human.
Application	IF, WB
Clonality	Polyclonal
Formulation	Supplied at 1.0mg/mL in phosphate buffered saline (without Mg ²⁺ and Ca ²⁺), pH 7.4, 150mM NaCl, 0.02% sodium azide and 50% glycerol.
Storage Instructions	Store at -20°C for one year. For short term storage and frequent use, store at 4°C for up to one month. Avoid repeated freeze-thaw cycles.
Host	Rabbit
Uniprot ID	P36888

Technical Details

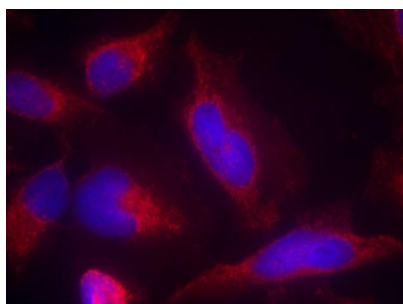
Immunogen	Peptide sequence around aa.589~593 (Y-F-Y-V-D) derived from Human FLT3.
Predicted Reactive Species	Canine, Monkey
Cross Reactivity	No cross reactivity with other proteins.
Isotype	IgG

Form	Liquid
Concentration	1 mg/ml
Purification	Antibodies were produced by immunizing rabbits with synthetic peptide and KLH conjugates. Antibodies were purified by affinity-chromatography using epitope-specific peptide.
Suggested Dilutions	<p>Dilute the sample so that the expected range of concentrations fall within the detection range of this kit.</p> <p>If the expected range of concentration is unknown, a pilot test should be conducted to decide the optimal dilution ratio for your samples.</p> <p>Some PubMed article(s) citing the expression level of this target are as follows:</p> <p>Boster Bio's internal QC testing used:</p> <p>Predicted MW: 130 160 kd</p> <p>Western blotting: 1:500~1:1000</p> <p>Immunofluorescence: 1:100~1:200</p>

Anti-FLT3(Ab-591) Antibody (A00188) Images



Western blot analysis of extracts from 293 and MCF cells using FLT3(Ab-591) antibody A00188.



Immunofluorescence staining of methanol-fixed Hela cells using FLT3(Ab-591) antibody A00188.

Submit a product review to Biocompare.com

Submit a review of this product to Biocompare.com to receive a \$20 Amazon.com giftcard! Your reviews help your fellow scientists make the right decisions. Thank you for your contribution.



Anti-FLT3(Ab-591) Antibody