

## Anti-CREB-BP Antibody

Catalog Number: A00205

### About CREBBP

Acetylates histones, giving a specific tag for transcriptional activation. Also acetylates non-histone proteins, like NCOA3 and FOXO1. Binds specifically to phosphorylated CREB and enhances its transcriptional activity toward cAMP-responsive genes. Acts as a coactivator of ALX1 in the presence of EP300. Acts as a circadian transcriptional coactivator which enhances the activity of the circadian transcriptional activators: NPAS2-ARNTL/BMAL1 and CLOCK-ARNTL/BMAL1 heterodimers.

Zoi Lygerou, Nucleic Acids Res., Feb 1994; 22: 5332 - 5340.

Karsten Grote, J. Biol. Chem., Dec 2004; 279: 55675 - 55681.

Kumi Nagamoto-Combs, J. Biol. Chem., Feb 1997; 272: 6051.

Stephen J. Elliman, Isaac, J. Biol. Chem., Jan 2006; 281: 16 -19

### Overview

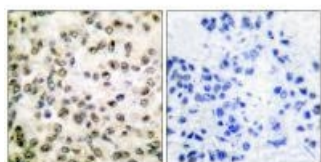
Product Name	Anti-CREB-BP Antibody
Reactive Species	Human
Description	Boster Bio Anti-CREB-BP Antibody (Catalog # A00205). Tested in WB, IHC, IF applications. This antibody reacts with Human.
Application	IF, IHC, WB
Clonality	Polyclonal
Formulation	Rabbit IgG in phosphate buffered saline (without Mg <sup>2+</sup> and Ca <sup>2+</sup> ), pH 7.4, 150mM NaCl, 0.02% sodium azide and 50% glycerol.
Storage Instructions	Store at -20°C for one year. For short term storage and frequent use, store at 4°C for up to one month. Avoid repeated freeze-thaw cycles.
Host	Rabbit
Uniprot ID	Q92793

### Technical Details

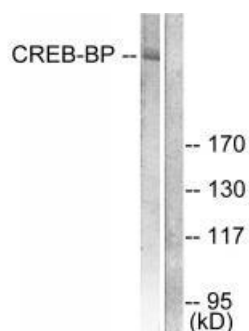
Immunogen	Synthesized peptide derived from human CREB-BP.
Predicted Reactive Species	Canine, Monkey
Cross Reactivity	No cross reactivity with other proteins.
Isotype	IgG
Form	Liquid

Concentration	1 mg/ml
Purification	The antibody was affinity-purified from rabbit antiserum by affinity-chromatography using epitope-specific immunogen.
Suggested Dilutions	<p>Dilute the sample so that the expected range of concentrations fall within the detection range of this kit.</p> <p>If the expected range of concentration is unknown, a pilot test should be conducted to decide the optimal dilution ratio for your samples.</p> <p>Some PubMed article(s) citing the expression level of this target are as follows:</p> <p>Boster Bio's internal QC testing used:</p> <p>Western blotting: 1:500~1:3000</p> <p>Immunohistochemistry: 1:50~1:100</p> <p>Immunofluorescence: 1:100~1:500</p>

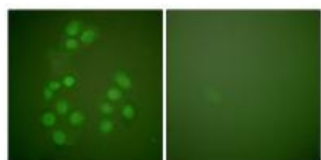
## Anti-CREB-BP Antibody (A00205) Images



Immunohistochemical analysis of paraffin-embedded human breast carcinoma tissue using CREB-BP antibody A00205.



Western blot analysis of extracts from HeLa cells, treated with insulin (0.01U/ml, 15mins), using CREB-BP antibody A00205.



Immunofluorescence analysis of A549 cells, using CREB-BP antibody A00205.

## 1 Publications Citing This Product

1. PubMed ID: 10.1016/j.regpep.2008.12.003, Role of CREB in vasoactive intestinal peptide-mediated wound healing in human bronchial epithelial cells

Visit [bosterbio.com/anti-creb-bp-antibody-a00205-boster.html](http://bosterbio.com/anti-creb-bp-antibody-a00205-boster.html) to see all 1 publications.

## Submit a product review to Biocompare.com

Submit a review of this product to Biocompare.com to receive a \$20 Amazon.com giftcard! Your reviews help your fellow scientists make the right decisions. Thank you for your contribution.

