

Anti-a-Synuclein (Ab-133) SNCA Antibody

Catalog Number: A00215-2

About SNCA

May be involved in the regulation of dopamine release and transport. Soluble protein, normally localized primarily at the presynaptic region of axons, which can form filamentous aggregates that are the major non amyloid component of intracellular inclusions in several neurodegenerative diseases (synucleinopathies). Induces fibrillization of microtubule-associated protein tau. Reduces neuronal responsiveness to various apoptotic stimuli, leading to a decreased caspase-3 activation.

Kozikowski AP, et al. (2006)ChemMedChem. 1(2):256-66.

Jakowec MW,et al.(2001)Dev Neurosci.23(2):91-9.

El-Agnaf OM,et al.(1998)FEBS Lett. 440(1-2):67-70.

Overview

Product Name	Anti-a-Synuclein (Ab-133) SNCA Antibody
Reactive Species	Human, Mouse, Rat
Description	Boster Bio Anti-a-Synuclein (Ab-133) SNCA Antibody (Catalog # A00215-2). Tested in WB, IF applications. This antibody reacts with Human, Mouse, Rat.
Application	IF, WB
Clonality	Polyclonal
Formulation	Supplied at 1.0mg/mL in phosphate buffered saline (without Mg ²⁺ and Ca ²⁺), pH 7.4, 150mM NaCl, 0.02% sodium azide and 50% glycerol.
Storage Instructions	Store at -20°C for one year. For short term storage and frequent use, store at 4°C for up to one month. Avoid repeated freeze-thaw cycles.
Host	Rabbit
Uniprot ID	P37840

Technical Details

Immunogen	Peptide sequence around aa. 131~135 (E-G-Y-Q-D) derived from Human a-Synuclein.
Predicted Reactive Species	Bovine, Canine, Equine, Guinea Pig, Pig
Isotype	IgG
Form	Liquid
Concentration	1 mg/ml

Purification	Antibodies were produced by immunizing rabbits with synthetic peptide and KLH conjugates. Antibodies were purified by affinity-chromatography using epitope-specific peptide.
Suggested Dilutions	Dilute the sample so that the expected range of concentrations fall within the detection range of this kit. If the expected range of concentration is unknown, a pilot test should be conducted to decide the optimal dilution ratio for your samples. Some PubMed article(s) citing the expression level of this target are as follows: Boster Bio's internal QC testing used: Predicted MW: 18kd Western blotting: 1:500~1:1000 Immunofluorescence: 1:100~1:200

Anti-a-Synuclein (Ab-133) SNCA Antibody (A00215-2) Images

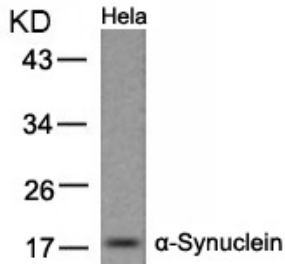
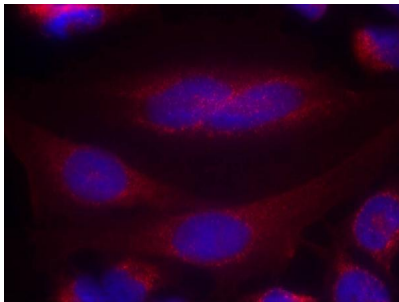


Figure 1. Western blot analysis of SNCA using anti-SNCA antibody (A00215-2). Electrophoresis was performed on a 5-20% SDS-PAGE gel at 70V (Stacking gel) / 90V (Resolving gel) for 2-3 hours. The sample well of each lane was loaded with 50ug of sample under reducing conditions. After Electrophoresis, proteins were transferred to a Nitrocellulose membrane at 150mA for 50-90 minutes. Blocked the membrane with 5% Non-fat Milk/ TBS for 1.5 hour at RT. The membrane was incubated with rabbit anti-SNCA antigen affinity purified polyclonal antibody (Catalog # A00215-2) at 0.5 ug/mL overnight at 4°C, then washed with TBS-0.1%Tween 3 times with 5 minutes each and probed with a goat anti-Rabbit IgG-HRP secondary antibody at a dilution of 1:10000 for 1.5 hour at RT. The signal is developed using an Enhanced Chemiluminescent detection (ECL) kit (Catalog # SA1022) with Tanon 5200 system. A specific band was detected for SNCA.



Immunofluorescence staining of methanol-fixed Hela cells using a-Synuclein(Ab-133) Antibody #A00215-2.

Submit a product review to Biocompare.com

Submit a review of this product to Biocompare.com to receive a \$20 Amazon.com giftcard! Your reviews help your fellow scientists make the right decisions. Thank you for your contribution.



Anti-a-Synuclein (Ab-133) SNCA Antibody