

## Anti-PPARGC1A Antibody

Catalog Number: A00236

### About PPARGC1A

The peroxisome proliferator-activated receptor gamma coactivator 1-alpha (PPARGC1A), also known as LEM-6, is a transcriptional coactivator that regulates the genes involved in energy metabolism (1). PPARGC1A interacts with PPARGgamma, which permits the interaction of PPARGC1A with multiple transcription factors. PPARGC1A can interact with, and regulate the activities of, cAMP response element binding protein (CREB) and nuclear respiratory factors (NRFs). It provides a direct link between external physiological stimuli and the regulation of mitochondrial biogenesis, and is a major factor that regulates muscle fiber type determination (2). PPARGC1A may be also involved in the development of obesity (3).

### Overview

Product Name	Anti-PPARGC1A Antibody
Reactive Species	Human, Mouse, Rat
Description	Boster Bio Anti-PPARGC1A Antibody (Catalog # A00236). Tested in ELISA, WB, IHC-P, IF applications. This antibody reacts with Human, Mouse, Rat.
Application	ELISA, IF, IHC-P, WB
Clonality	Polyclonal Clone: SK7
Formulation	PPARGC1A antibody is supplied in PBS containing 0.02% sodium azide.
Storage Instructions	PPARGC1A antibody can be stored at 4°C up to one year. Antibodies should not be exposed to prolonged high temperatures.
Host	Rabbit
Uniprot ID	Q9UBK2

### Technical Details

Immunogen	PPARGC1A antibody was raised against a 19 amino acid peptide near the carboxy terminus of human PPARGC1A. The immunogen is located within the last 50 amino acids of PPARGC1A.
Predicted Reactive Species	Bovine, Pig
Cross Reactivity	PPARGC1A antibody is human, mouse and rat reactive. At least three isoforms of PPARGC1A are known to exist; this antibody only detects the longest isoform.
Isotype	IgG
Form	Liquid
Concentration	1 mg/mL
Purification	PPARGC1A antibody is affinity chromatography purified via peptide column.

**Suggested Dilutions**

Dilute the sample so that the expected range of concentrations fall within the detection range of this kit.

If the expected range of concentration is unknown, a pilot test should be conducted to decide the optimal dilution ratio for your samples.

Some PubMed article(s) citing the expression level of this target are as follows:

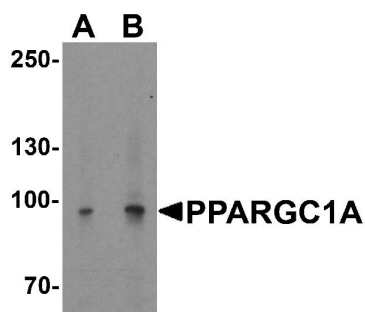
Boster Bio's internal QC testing used:

PPARGC1A antibody can be used for detection of PPARGC1A by Western blot at 1 - 2 ug/ml.

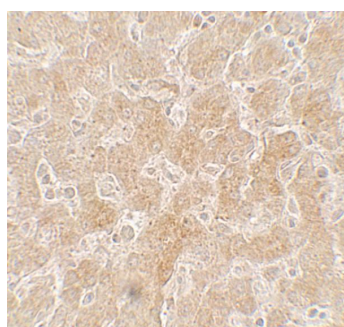
Antibody can also be used for Immunohistochemistry starting at 5 ug/mL. For immunofluorescence start at 20 ug/mL.

Antibody validated: Western Blot in human and mouse samples; Immunohistochemistry in human samples and Immunofluorescence in human samples. All other applications and species not yet tested. Optimal dilutions for each application should be determined by the researcher.

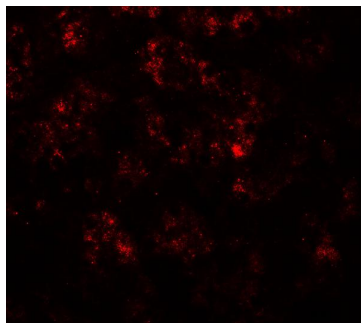
## Anti-PPARGC1A Antibody (A00236) Images



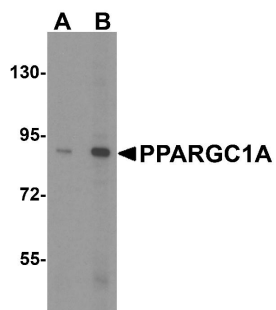
Western blot analysis of PPARGC1A in mouse liver tissue lysate with PPARGC1A antibody at (A) 1 and (B) 2 ug/ml.



Immunohistochemistry of PPARGC1A in human liver tissue with PPARGC1A antibody at 5 ug/mL.



Immunofluorescence of PPARGC1A in human liver tissue with PPARGC1A antibody at 20 ug/mL.



Western blot analysis of PPARGC1A expression in human liver tissue lysate with PPARGC1A antibody at (A) 1 and (B) 2 ug/ml.

## Submit a product review to Biocompare.com

Submit a review of this product to Biocompare.com to receive a \$20 Amazon.com giftcard! Your reviews help your fellow scientists make the right decisions. Thank you for your contribution.



## Anti-PPARGC1A Antibody