

## Anti-IRS-1 (Ab-636) Antibody

Catalog Number: A00268

### About IRS1

May mediate the control of various cellular processes by insulin. When phosphorylated by the insulin receptor binds specifically to various cellular proteins containing SH2 domains such as phosphatidylinositol 3-kinase p85 subunit or GRB2. Activates phosphatidylinositol 3-kinase when bound to the regulatory p85 subunit

Ozes ON, et al. (2001) Proc Natl Acad Sci U S A; 98(8): 4640-4645

Tzatsos A, et al. (2006) Mol Cell Biol; 26(1): 63-76

Kadowaki T, et al. (2000) J Clin Invest; 106(4): 459-465

Ozes ON, et al. (2001) Proc Natl Acad Sci U S A; 98(8): 4640-4645

Szanto I, et al. (2000) Proc Natl Acad Sci U S A; 97(5): 2355-2360

### Overview

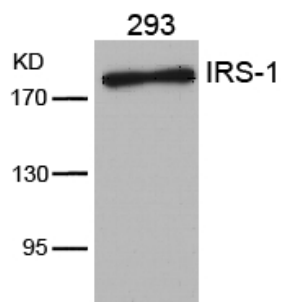
Product Name	Anti-IRS-1 (Ab-636) Antibody
Reactive Species	Human, Mouse, Rat
Description	Boster Bio Anti-IRS-1 (Ab-636) Antibody (Catalog # A00268). Tested in WB, IHC, IF applications. This antibody reacts with Human, Mouse, Rat.
Application	IF, IHC, WB
Clonality	Polyclonal
Formulation	Supplied at 1.0mg/mL in phosphate buffered saline (without Mg <sup>2+</sup> and Ca <sup>2+</sup> ), pH 7.4, 150mM NaCl, 0.02% sodium azide and 50% glycerol.
Storage Instructions	Store at -20°C for one year. For short term storage and frequent use, store at 4°C for up to one month. Avoid repeated freeze-thaw cycles.
Host	Rabbit
Uniprot ID	P35568

### Technical Details

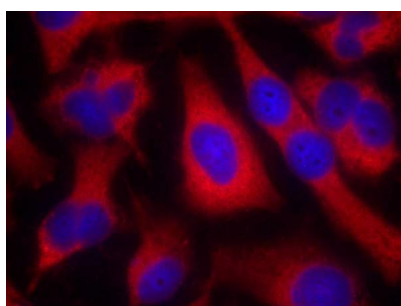
Immunogen	Peptide sequence around aa.634~638 (P-M-S-P-K) derived from Human IRS-1.
Predicted Reactive Species	Bovine, Canine, Pig, Rabbit
Isotype	IgG
Form	Liquid
Concentration	1 mg/ml

Purification	Antibodies were produced by immunizing rabbits with synthetic peptide and KLH conjugates. Antibodies were purified by affinity-chromatography using epitope-specific peptide.
Suggested Dilutions	Dilute the sample so that the expected range of concentrations fall within the detection range of this kit. If the expected range of concentration is unknown, a pilot test should be conducted to decide the optimal dilution ratio for your samples. Some PubMed article(s) citing the expression level of this target are as follows: Boster Bio's internal QC testing used: Predicted MW: 180kd Western blotting: 1:500~1:1000 Immunohistochemistry: 1:50~1:100 Immunofluorescence: 1:100~1:200

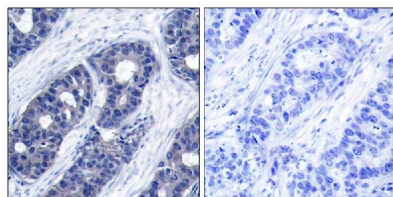
## Anti-IRS-1 (Ab-636) Antibody (A00268) Images



Western blot analysis of extracts from 293 cells using IRS-1(Ab-636) Antibody #A02268.



Immunofluorescence staining of methanol-fixed Hela cells using IRS-1(Ab-636) Antibody #A00268.



Immunohistochemical analysis of paraffin-embedded human breast carcinoma tissue using IRS-1(Ab-636) Antibody #A02268(left) or the same antibody preincubated with blocking peptide(right).

## Submit a product review to Biocompare.com

Submit a review of this product to Biocompare.com to receive a \$20 Amazon.com giftcard! Your reviews help your fellow scientists make the right decisions. Thank you for your contribution.



Anti-IRS-1 (Ab-636) Antibody