

## Anti-CEA Antibody (Center)

Catalog Number: A00356-1

### About CEACAM5

CEA is a cell surface glycoprotein that plays a role in cell adhesion and in intracellular signaling. It is a receptor for E.coli Dr adhesins.

### Overview

Product Name	Anti-CEA Antibody (Center)
Reactive Species	Human
Description	Boster Bio Anti-CEA Antibody (Center) (Catalog # A00356-1). Tested in IHC-P-Leica, Flow Cytometry, WB application(s). This antibody reacts with Human.
Application	Flow Cytometry, WB, IHC-P-Leica
Clonality	Polyclonal
Formulation	Purified polyclonal antibody supplied in PBS with 0.09% (W/V) sodium azide.
Storage Instructions	Maintain refrigerated at 2-8°C for up to 2 weeks. For long-term storage, store at -20°C in small aliquots to prevent freeze-thaw cycles.
Host	Rabbit
Uniprot ID	P06731

### Technical Details

Immunogen	This CEA antibody is generated from rabbits immunized with a KLH conjugated synthetic peptide between 400-429 amino acids from the Central region of human CEA.
Predicted Reactive Species	Chicken, Mouse, Rat, Xenopus
Recommended Detection Systems	Boster recommends Enhanced Chemiluminescent Kit with anti-Rabbit IgG (EK1002) for Western blot, and HRP Conjugated anti-Rabbit IgG Super Vision Assay Kit (SV0002-1) for IHC(P).
Cross Reactivity	No cross reactivity with other proteins.
Isotype	Rabbit IgG
Form	Liquid
Purification	This antibody is purified through a protein A column, followed by peptide affinity purification.
Suggested Dilutions	Dilute the sample so that the expected range of concentrations fall within the detection range of this kit. If the expected range of concentration is unknown, a pilot test should be conducted to decide the optimal dilution ratio for your samples.

Some PubMed article(s) citing the expression level of this target are as follows:

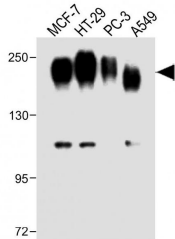
Boster Bio's internal QC testing used:

WB: 1:1000

IHC-P-Leica: 1:500

FC: 1:10-1:50

## Anti-CEA Antibody (Center) (A00356-1) Images



All lanes : Anti-CEA Antibody (Center) at 1:1000 dilution

Lane 1: MCF-7 whole cell lysate

Lane 2: HT-29 whole cell lysate

Lane 3: PC-3 whole cell lysate

Lane 4: A549 whole cell lysate

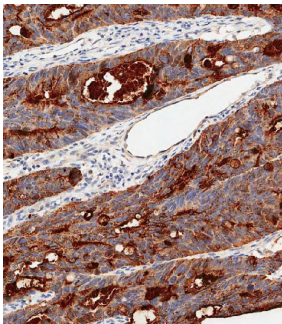
Lysates/proteins at 20 µg per lane.

Secondary

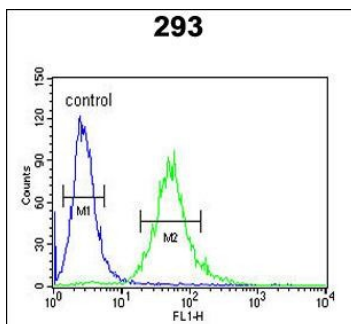
Goat Anti-Rabbit IgG, (H+L), Peroxidase conjugated at 1/10000 dilution.

Predicted band size : 77 kDa

Blocking/Dilution buffer: 5% NFDM/TBST.



Immunohistochemical analysis of paraffin-embedded Human colon carcinoma tissue using A00356-1 performed on the Leica® BOND RXm. Tissue was fixed with formaldehyde at room temperature, antigen retrieval was by heat mediation with a EDTA buffer (pH9. 0). Samples were incubated with primary antibody (1:500) for 1 hours at room temperature. A undiluted biotinylated CRF Anti-Polyvalent HRP Polymer antibody was used as the secondary antibody.



CEA Antibody (Center) (Cat. #A00356-1) flow cytometric analysis of 293 cells (right histogram) compared to a negative control cell (left histogram). FITC-conjugated goat-anti-rabbit secondary antibodies were used for the analysis.

**Submit a product review to Biocompare.com**

Submit a review of this product to Biocompare.com to receive a \$20 Amazon.com giftcard! Your reviews help your fellow scientists make the right decisions. Thank you for your contribution.



Anti-CEA Antibody (Center)