

Anti-MIP-1 alpha CCL3 Antibody

Catalog Number: A00405

About CCL3

Mouse MIP-1alpha, or Ccl3, of the intercrine beta (chemokine CC family) is a secreted cytokine with inflammatory, pyrogenic and chemokinetic properties. It is expressed in lung, spleen, and pancreas, and has a potent chemotactic activity for eosinophils. Ccl3 binding to a high-affinity receptor activates calcium release in neutrophils.

Overview

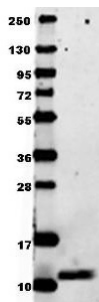
Product Name	Anti-MIP-1 alpha CCL3 Antibody
Reactive Species	Mouse
Description	Boster Bio Anti-MIP-1 alpha CCL3 Antibody (Catalog # A00405). Tested in WB applications. This antibody reacts with Mouse.
Application	WB
Clonality	Polyclonal
Formulation	0.02 M Potassium Phosphate, 0.15 M Sodium Chloride, pH 7.2
Storage Instructions	Store vial at 4°C prior to restoration. For extended storage aliquot contents and freeze at -20°C or below. Avoid cycles of freezing and thawing. Centrifuge product if not completely clear after standing at room temperature. This product is stable for several weeks at 4°C as an undiluted liquid. Dilute only prior to immediate use. Expiration date is six (6) months from date of opening. (Ship on dry ice.)
Host	Rabbit
Uniprot ID	P10855

Technical Details

Immunogen	This IgG fraction antibody was prepared from rabbit antiserum after repeated immunizations with recombinant truncated mouse MIP-1alpha protein produced in E.coli.
Predicted Reactive Species	S. Cerevisiae
Cross Reactivity	No cross reactivity with other proteins.
Isotype	IgG
Form	Lyophilized
Concentration	1.0 mg/mL by UV absorbance at 280 nm
Purification	This product is an IgG fraction antibody purified from monospecific antiserum by a multi-step

	process which includes delipidation, salt fractionation and ion exchange chromatography followed by extensive dialysis against the buffer stated above. This antibody is specific for mouse MIP-1alpha protein. Cross-reactivity with MIP-1alpha from other sources has not been determined.
Suggested Dilutions	<p>Dilute the sample so that the expected range of concentrations fall within the detection range of this kit.</p> <p>If the expected range of concentration is unknown, a pilot test should be conducted to decide the optimal dilution ratio for your samples.</p> <p>Some PubMed article(s) citing the expression level of this target are as follows:</p> <p>Boster Bio's internal QC testing used:</p> <p>ELISA: 1:10,000</p> <p>WB: 1:1000</p>

Anti-MIP-1 alpha CCL3 Antibody (A00405) Images



Western blot analysis of recombinant mouse MIP-1 alpha/Ccl3 raised in E.coli using rabbit anti-MIP-1 alpha polyclonal antibody (Catalog # A00405). The blot was developed using chemiluminescence (ECL) method (Catalog # EK1002).

Submit a product review to Biocompare.com

Submit a review of this product to Biocompare.com to receive a \$20 Amazon.com giftcard! Your reviews help your fellow scientists make the right decisions. Thank you for your contribution.



Anti-MIP-1 alpha CCL3 Antibody