

Anti-IL-8 CXCL8 Antibody

Catalog Number: A00423

Introduction

CD3epsilon is a 20kD chain, which together with CD3lambda, CD3delta, and CD3zeta, and a T cell receptor (alpha/beta or gamma/delta) form the CD3/T-cell receptor complex. It is a specific marker for T lymphocytes, NK T cells, and some thymocytes. Crosslinking of TCR initiates an intracellular signaling cascade resulting in cellular activation and proliferation. The OKT3 antibody has been reported to have potent immunosuppressive properties in vivo and has been proved effective in the treatment of renal, heart, and liver allograft rejection.

This antibody is routinely tested by flow cytometric analysis. Flow cytometry and other applications were tested during antibody development or are reported in the literature.

Application Information

Each lot of this antibody has been quality control tested by flow cytometric analysis of human PBMCs. For flow cytometric staining, the recommended use of this antibody is $\leq 0.5\mu\text{g}$ per 1×10^6 cells in $100\mu\text{l}$ of staining volume followed by a secondary fluorescent conjugated anti-mouse antibody. However, it is strongly suggested that the antibody reactivity be empirically titrated for optimal performance in the application of interest.

About IL8

Interleukin-8 is a chemokine produced by macrophages and other cell types such as epithelial cells. Human IL-8 (CXCL8) antibody is commonly used in many experiments focused around inflammation. Anti-IL-8 antibody is ideal for investigators involved in Cancer, Immunology and Cardiovascular research.

Overview

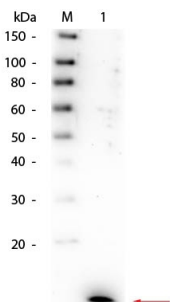
Product Name	Anti-IL-8 CXCL8 Antibody
Reactive Species	Human
Description	Boster Bio Anti-IL-8 CXCL8 Antibody (Catalog # A00423). Tested in ELISA, WB applications. This antibody reacts with Human.
Conjugate	APC
Application	ELISA, WB
Clonality	Polyclonal SK7
Formulation	None
Storage Instructions	Store anti-IL8 antibody at -20°C prior to opening. Aliquot contents and freeze at -20°C or below for extended storage. Avoid cycles of freezing and thawing. Centrifuge product if not completely clear after standing at room temperature. This product is stable for several weeks at 4°C as an undiluted liquid. Dilute only prior to immediate use. Expiration date is one (1) year from date of opening. (Ship on dry ice.)

Host	Rabbit
Uniprot ID	P10145

Technical Details

Immunogen	The whole rabbit serum was prepared by repeated immunizations with recombinant human IL-8 produced in E.coli.
Predicted Reactive Species	Bovine, Canine
Isotype	Antiserum
Form	Liquid (sterile filtered)
Concentration	75 mg/mL by Refractometry
Purification	Anti-IL 8 antiserum has been heated to 56°C for 30 minutes. The antiserum detects recombinant and native IL-8 present in body fluids and cell supernatants in ELISA. Although likely to be functional, this antiserum has not been evaluated in other assays, including neutralization and immunohistochemistry.
Suggested Dilutions	<p>Dilute the sample so that the expected range of concentrations fall within the detection range of this kit.</p> <p>If the expected range of concentration is unknown, a pilot test should be conducted to decide the optimal dilution ratio for your samples.</p> <p>Some PubMed article(s) citing the expression level of this target are as follows:</p> <p>Boster Bio's internal QC testing used:</p> <p>ELISA: 1:1,000 - 1:5,000</p> <p>IHC: 1:400 - 1:800</p> <p>IP: 1:400 - 1:800</p> <p>WB: 1:500 - 1:2,000</p>

Anti-IL-8 CXCL8 Antibody (A00423) Images



Western blot analysis of IL-8 expression in Recombinant Human IL-8 50ng (lane 1). IL-8 at 11KD was detected using rabbit anti-IL-8 Antigen Affinity purified polyclonal antibody (Catalog # A00423) at 1:1000. The blot was developed using chemiluminescence (ECL) method (Catalog # EK1002).

Submit a product review to Biocompare.com

Submit a review of this product to Biocompare.com to receive a \$20 Amazon.com giftcard! Your reviews help your fellow scientists make the right decisions. Thank you for your contribution.



Anti-IL-8 CXCL8 Antibody