

## Anti-Her3/ErbB3 (Ab-1328) Antibody

Catalog Number: A00539-2

### About ERBB3

Binds and is activated by neuregulins and NTAK.

### Overview

Product Name	Anti-Her3/ErbB3 (Ab-1328) Antibody
Reactive Species	Human, Mouse, Rat
Description	Boster Bio Anti-Her3/ErbB3 (Ab-1328) Antibody (Catalog # A00539-2). Tested in WB, IHC applications. This antibody reacts with Human, Mouse, Rat.
Application	IHC, WB
Clonality	Polyclonal 8H7
Formulation	Supplied at 1.0mg/mL in phosphate buffered saline (without Mg <sup>2+</sup> and Ca <sup>2+</sup> ), pH 7.4, 150mM NaCl, 0.02% sodium azide and 50% glycerol.
Storage Instructions	Store at -20°C for one year. For short term storage and frequent use, store at 4°C for up to one month. Avoid repeated freeze-thaw cycles.
Host	Rabbit
Uniprot ID	P21860

### Technical Details

Immunogen	Peptide sequence around aa. 1326~1330 (P-D-Y-W-H) derived from Human Her3/ErbB3.
Predicted Reactive Species	Bovine, Sheep
Cross Reactivity	No cross reactivity with other proteins.
Isotype	IgG
Form	Liquid
Concentration	1 mg/ml
Purification	Antibodies were produced by immunizing rabbits with synthetic peptide and KLH conjugates. Antibodies were purified by affinity-chromatography using epitope-specific peptide.
Suggested Dilutions	Dilute the sample so that the expected range of concentrations fall within the detection range of this kit. If the expected range of concentration is unknown, a pilot test should be conducted to decide the optimal dilution ratio for your samples.

Some PubMed article(s) citing the expression level of this target are as follows:

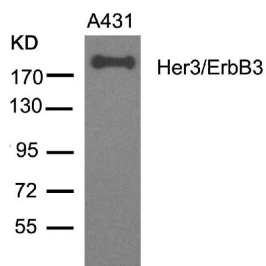
Boster Bio's internal QC testing used:

Predicted MW: 185kd

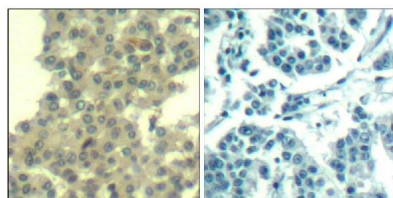
Western blotting: 1:500~1:1000

Immunohistochemistry: 1:50~1:100

## Anti-Her3/ErbB3 (Ab-1328) Antibody (A00539-2) Images



**Figure 1.** Western blot analysis of ERBB3 using anti-ERBB3 antibody (A00539-2). Electrophoresis was performed on a 5-20% SDS-PAGE gel at 70V (Stacking gel) / 90V (Resolving gel) for 2-3 hours. The sample well of each lane was loaded with 50ug of sample under reducing conditions. After Electrophoresis, proteins were transferred to a Nitrocellulose membrane at 150mA for 50-90 minutes. Blocked the membrane with 5% Non-fat Milk/ TBS for 1.5 hour at RT. The membrane was incubated with rabbit anti-ERBB3 antigen affinity purified polyclonal antibody (Catalog # A00539-2) at 0.5 ug/mL overnight at 4°C, then washed with TBS-0.1%Tween 3 times with 5 minutes each and probed with a goat anti-Rabbit IgG-HRP secondary antibody at a dilution of 1:10000 for 1.5 hour at RT. The signal is developed using an Enhanced Chemiluminescent detection (ECL) kit (Catalog # SA1022) with Tanon 5200 system. A specific band was detected for ERBB3.



**Figure 2.** IHC analysis of ERBB3 using anti-ERBB3 antibody (A00539-2). ERBB3 was detected in paraffin-embedded section. Heat mediated antigen retrieval was performed in citrate buffer (pH6, epitope retrieval solution) for 20 mins. The tissue section was blocked with 10% goat serum. The tissue section was then incubated with 1ug/ml rabbit anti-ERBB3 Antibody (A00539-2) overnight at 4°C. Biotinylated goat anti Rabbit IgG antibody was used as secondary antibody and incubated for 30 minutes at 37°C. The tissue section was developed using Streptavidin-Biotin-Complex (SABC)(Catalog # SA1022) with DAB as the chromogen.

## Submit a product review to Biocompare.com

Submit a review of this product to Biocompare.com to receive a \$20 Amazon.com giftcard! Your reviews help your fellow scientists make the right decisions. Thank you for your contribution.



Anti-Her3/ErbB3 (Ab-1328) Antibody