

## Anti-Cyclin E1 CCNE1 Antibody

Catalog Number: A00543-1

### About CCNE1

Essential for the control of the cell cycle at the G1/S (start) transition.

Charles Spruck, Cancer Res., Jul 2006; 66: 7355 - 7360.

Nathalie Cueille, J. Virol., Sep 1998; 72: 7255 - 7262.

Wentao Deng, J. Virol., Dec 2004; 78: 13954 - 13965.

Tianlin Ma, PNAS, Jan 1999; 96: 382.

### Overview

Product Name	Anti-Cyclin E1 CCNE1 Antibody
Reactive Species	Human, Mouse, Rat
Description	Boster Bio Anti-Cyclin E1 CCNE1 Antibody (Catalog # A00543-1). Tested in WB, IHC, IF applications. This antibody reacts with Human, Mouse, Rat.
Application	IF, IHC, WB
Clonality	Polyclonal
Formulation	Rabbit IgG in phosphate buffered saline (without Mg <sup>2+</sup> and Ca <sup>2+</sup> ), pH 7.4, 150mM NaCl, 0.02% sodium azide and 50% glycerol.
Storage Instructions	Store at -20°C for one year. For short term storage and frequent use, store at 4°C for up to one month. Avoid repeated freeze-thaw cycles.
Host	Rabbit
Uniprot ID	P24864

### Technical Details

Immunogen	Synthesized peptide derived from human Cyclin E1.
Predicted Reactive Species	Canine, Monkey
Isotype	IgG
Form	Liquid
Concentration	1 mg/ml
Purification	The antibody was affinity-purified from rabbit antiserum by affinity-chromatography using epitope-specific immunogen.

**Suggested Dilutions**

Dilute the sample so that the expected range of concentrations fall within the detection range of this kit.

If the expected range of concentration is unknown, a pilot test should be conducted to decide the optimal dilution ratio for your samples.

Some PubMed article(s) citing the expression level of this target are as follows:

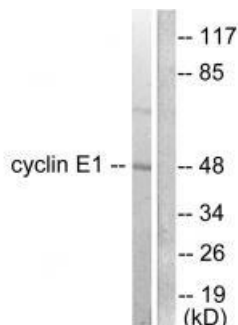
Boster Bio's internal QC testing used:

Western blotting: 1:500~1:3000

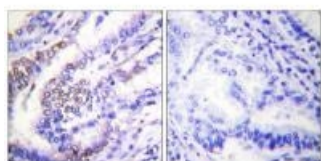
Immunohistochemistry: 1:50~1:100

Immunofluorescence: 1:100~1:500

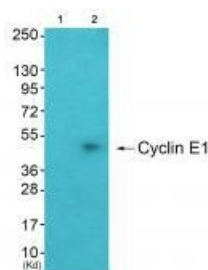
## Anti-Cyclin E1 CCNE1 Antibody (A00543-1) Images



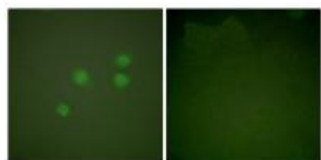
Western blot analysis of extracts from K562 cells, using Cyclin E1 antibody A00543-1.



Immunohistochemical analysis of paraffin-embedded human lung carcinoma tissue using Cyclin E1 antibody A00543-1.



Western blot analysis of extracts from A549 cells (Lane 2), using Cyclin E1 antibody A00543-1. The lane on the left is treated with synthesized peptide.



Immunofluorescence analysis of A549 cells, using Cyclin E1 antibody A00543-1.

## 1 Publications Citing This Product

1. PubMed ID: 23145020, Wu Y, Tao Y, Chen Y, Xu W. Plos One. 2012;7(11):E48917. Doi: 10.1371/Journal.Pone.0048917. Epub 2012 Nov 7. Rhoc Regulates The Proliferation Of Gastric Cancer Cells Through Interaction With Iqgap1.

Visit [bosterbio.com/anti-cyclin-e1-antibody-a00543-1-boster.html](http://bosterbio.com/anti-cyclin-e1-antibody-a00543-1-boster.html) to see all 1 publications.

## Submit a product review to Biocompare.com

Submit a review of this product to Biocompare.com to receive a \$20 Amazon.com giftcard! Your reviews help your fellow scientists make the right decisions. Thank you for your contribution.



Anti-Cyclin E1 CCNE1 Antibody