

Anti-MED1/Trap220 Antibody

Catalog Number: A00550

About MED1

Component of the Mediator complex, a coactivator involved in the regulated transcription of nearly all RNA polymerase II-dependent genes. Mediator functions as a bridge to convey information from gene-specific regulatory proteins to the basal RNA polymerase II transcription machinery. Mediator is recruited to promoters by direct interactions with regulatory proteins and serves as a scaffold for the assembly of a functional preinitiation complex with RNA polymerase II and the general transcription factors.

Drane P., Oncogene 15:3013-3024(1997).

Yuan C.-X., Proc. Natl. Acad. Sci. U.S.A. 95:7939-7944(1998).

Naeaeer A.M., Nature 398:828-832(1999).

Overview

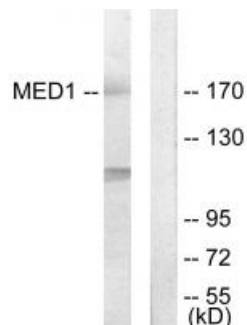
Product Name	Anti-MED1/Trap220 Antibody
Reactive Species	Human, Mouse
Description	Boster Bio Anti-MED1/Trap220 Antibody (Catalog # A00550). Tested in WB, IHC applications. This antibody reacts with Human, Mouse.
Application	IHC, WB
Clonality	Polyclonal
Formulation	Rabbit IgG in phosphate buffered saline (without Mg ²⁺ and Ca ²⁺), pH 7.4, 150mM NaCl, 0.02% sodium azide and 50% glycerol.
Storage Instructions	Store at -20°C for one year. For short term storage and frequent use, store at 4°C for up to one month. Avoid repeated freeze-thaw cycles.
Host	Rabbit
Uniprot ID	Q15648

Technical Details

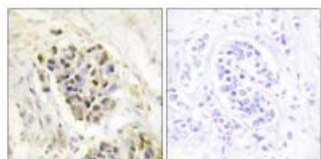
Immunogen	Synthesized peptide derived from internal of human MED1.
Predicted Reactive Species	Canine, Monkey
Isotype	IgG
Form	Liquid
Concentration	1 mg/ml

Purification	The antibody was affinity-purified from rabbit antiserum by affinity-chromatography using epitope-specific immunogen.
Suggested Dilutions	<p>Dilute the sample so that the expected range of concentrations fall within the detection range of this kit.</p> <p>If the expected range of concentration is unknown, a pilot test should be conducted to decide the optimal dilution ratio for your samples.</p> <p>Some PubMed article(s) citing the expression level of this target are as follows:</p> <p>Boster Bio's internal QC testing used:</p> <p>Western blotting: 1:500~1:3000</p> <p>Immunohistochemistry: 1:50~1:100</p>

Anti-MED1/Trap220 Antibody (A00550) Images



Western blot analysis of extracts from Jurkat cells, using MED1 antibody A00550.



Immunohistochemistry analysis of paraffin-embedded human breast carcinoma tissue using MED1 antibody A00550.

Submit a product review to Biocompare.com

Submit a review of this product to Biocompare.com to receive a \$20 Amazon.com giftcard! Your reviews help your fellow scientists make the right decisions. Thank you for your contribution.



Anti-MED1/Trap220 Antibody