

Anti-MSH6 Antibody

Catalog Number: A00553-1

About MSH6

Binds and is activated by neuregulins and NTAK.

Overview

Product Name	Anti-MSH6 Antibody
Reactive Species	Human, Mouse, Rat
Description	Boster Bio Anti-MSH6 Antibody catalog # A00553-1. Tested in Flow Cytometry, IHC, ICC, WB applications. This antibody reacts with Human, Mouse, Rat.
Application	Flow Cytometry, IHC, ICC, WB
Clonality	Polyclonal 8H7
Formulation	1*TBS (pH7.4), 1%BSA, 40%Glycerol. Preservative: 0.05% Sodium Azide.
Storage Instructions	Store at -20°C for one year. For short term storage and frequent use, store at 4°C for up to one month. Avoid repeated freeze-thaw cycles.
Host	Rabbit
Uniprot ID	P52701

Technical Details

Immunogen	A synthetic peptide corresponding to a sequence at the N-terminus of human MSH6, which shares 90.6% and 84.4% amino acid (aa) sequence identity with mouse and rat MSH6, respectively.
Predicted Reactive Species	Bovine, Canine, Guinea Pig, Pig, Rabbit
Cross Reactivity	No cross reactivity with other proteins.
Isotype	IgG
Form	Liquid
Concentration	1 mg/mL.
Purification	Peptide affinity purified
Suggested Dilutions	Dilute the sample so that the expected range of concentrations fall within the detection range of this kit. If the expected range of concentration is unknown, a pilot test should be conducted to decide the optimal dilution ratio for your samples. Some PubMed article(s) citing the expression level of this target are as follows:

	Boster Bio's internal QC testing used: WB, 1:500-1:2000
--	--

Anti-MSH6 Antibody (A00553-1) Images

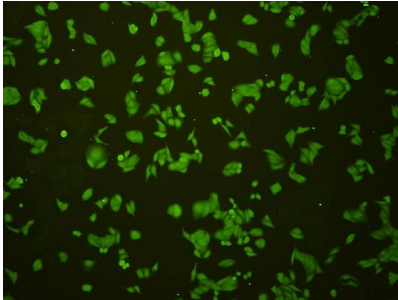


Figure 2. Immunocytochemistry staining of MSH6 using Anti-MSH6 Antibody (A00553-1).

ICC staining MSH6 in Hela cells (green). Cells were fixed in paraformaldehyde

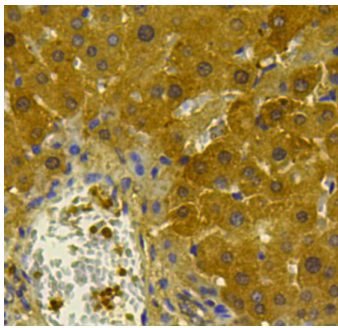


Figure 3. Immunohistochemistry validation of MSH6 using Anti-MSH6 Antibody (A00553-1).

Immunohistochemical analysis of paraffin-embedded rat liver tissue using anti-MSH6 antibody. Counter stained with hematoxylin.

For more protocol information of IHC

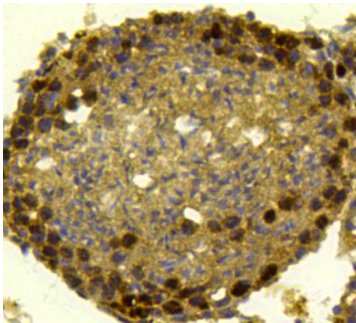


Figure 4. Immunohistochemistry validation of MSH6 using Anti-MSH6 Antibody (A00553-1).

Immunohistochemical analysis of paraffin-embedded rat testicle tissue using anti-MSH6 antibody. Counter stained with hematoxylin.

For more protocol information of IHC

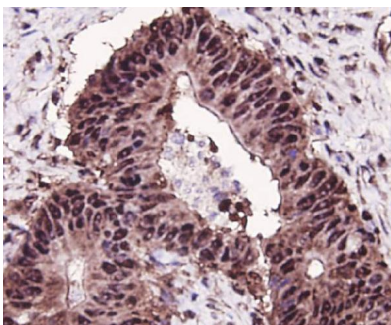


Figure 5. Immunohistochemistry validation of MSH6 using Anti-MSH6 Antibody (A00553-1).

Immunohistochemical analysis of paraffin-embedded human colon cancer tissue using anti-MSH6 antibody. Counter stained with hematoxylin.

For more protocol information of IHC

Figure 6. Immunohistochemistry validation of MSH6 using Anti-MSH6 Antibody (A00553-1).

Immunohistochemical analysis of paraffin-embedded mouse testicle tissue using anti-MSH6 antibody. Counter stained with hematoxylin.

For more protocol information of IHC

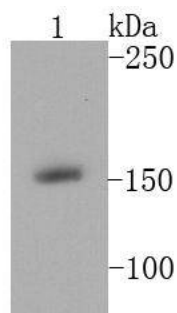
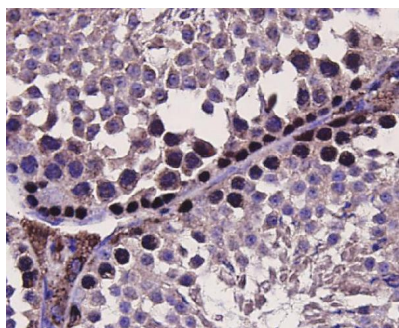


Figure 1. Western blotting validation for Anti-MSH6 Antibody A00553-1

Western blot analysis of MSH6 on A431 cell lysates using anti-MSH6 antibody at 1/1000 dilution. Electrophoresis was performed on a SDS-PAGE gel. To determine SDS-PAGE gel concentration

Submit a product review to Biocompare.com

Submit a review of this product to Biocompare.com to receive a \$20 Amazon.com giftcard! Your reviews help your fellow scientists make the right decisions. Thank you for your contribution.



Anti-MSH6 Antibody