

Anti-PLCG1 (Ab-771) Antibody

Catalog Number: A00677

About PLCG1

Mediates the production of the second messenger molecules diacylglycerol (DAG) and inositol 1,4,5-trisphosphate (IP3). Plays an important role in the regulation of intracellular signaling cascades. Becomes activated in response to ligand-mediated activation of receptor-type tyrosine kinases, such as PDGFRA, PDGFRB, FGFR1, FGFR2, FGFR3 and FGFR4. Plays a role in actin reorganization and cell migration.

Denis Tvorogov, J. Cell Sci., Feb 2005; 118: 601 - 610.

Brenda J. Irvin, Mol. Cell. Biol., Dec 2000; 20: 9149 - 9161.

Benoit Poulin, J. Biol. Chem., Feb 2000; 275: 6411.

Ichiro Nakamura, J. Cell Biol., Jan 2001; 152: 361.

Overview

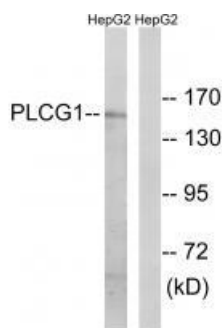
Product Name	Anti-PLCG1 (Ab-771) Antibody
Reactive Species	Human, Mouse, Rat
Description	Boster Bio Anti-PLCG1 (Ab-771) Antibody (Catalog # A00677). Tested in WB, IHC applications. This antibody reacts with Human, Mouse, Rat.
Application	IHC, WB
Clonality	Polyclonal
Formulation	Rabbit IgG in phosphate buffered saline (without Mg ²⁺ and Ca ²⁺), pH 7.4, 150mM NaCl, 0.02% sodium azide and 50% glycerol.
Storage Instructions	Store at -20°C for one year. For short term storage and frequent use, store at 4°C for up to one month. Avoid repeated freeze-thaw cycles.
Host	Rabbit
Uniprot ID	P19174

Technical Details

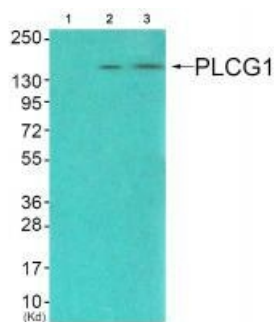
Immunogen	Synthesized non-phosphopeptide derived from human PLCG1 around the phosphorylation site of tyrosine 771 (P-D-Y-G-A).
Predicted Reactive Species	Boar, Bovine, Canine, Golden Hamster
Cross Reactivity	No cross reactivity with other proteins.
Isotype	IgG
Form	Liquid

Concentration	1 mg/ml
Purification	The antibody was affinity-purified from rabbit antiserum by affinity-chromatography using epitope-specific immunogen.
Suggested Dilutions	<p>Dilute the sample so that the expected range of concentrations fall within the detection range of this kit.</p> <p>If the expected range of concentration is unknown, a pilot test should be conducted to decide the optimal dilution ratio for your samples.</p> <p>Some PubMed article(s) citing the expression level of this target are as follows:</p> <p>Boster Bio's internal QC testing used:</p> <p>Western blotting: 1:500~1:3000</p> <p>Immunohistochemistry: 1:50~1:100</p>

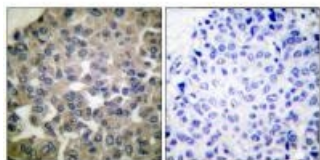
Anti-PLCG1 (Ab-771) Antibody (A00677) Images



Western blot analysis of extracts from COS7 cells treated with EGF (200ng/ml, 30min), using PLCG1 (Ab-771) antibody A00677.



Western blot analysis of extracts from COS7 cells (Lane 2), and JK cells (Lane 3), using PLCG1 (Ab-771) antibody A00677. The lane on the left is treated with synthesized peptide.



Immunohistochemical analysis of paraffin-embedded human breast carcinoma tissue using PLCG1 (Ab-771) antibody A00677.

Submit a product review to Biocompare.com

Submit a review of this product to Biocompare.com to receive a \$20 Amazon.com giftcard! Your reviews help your fellow scientists make the right decisions. Thank you for your contribution.



Anti-PLCG1 (Ab-771) Antibody