

Anti-Cyclin A CCNA2 Antibody

Catalog Number: A00700

About CCNA2

Anti-Cyclin A detects Cyclin A. Cyclin A is a member of the cyclin family. Cyclin A binds to S phase Cdk2 and is required for the cell to progress through the S phase. Cyclin A/ Cdk2 is inhibited by the complex p21CIP. Anti-Cyclin A Antibody is ideal for investigators involved in Cell Signaling, cell biology and Signal Transduction research.

Overview

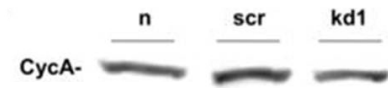
Product Name	Anti-Cyclin A CCNA2 Antibody
Reactive Species	Human
Description	Boster Bio Anti-Cyclin A CCNA2 Antibody (Catalog # A00700). Tested in IHC, WB applications. This antibody reacts with Human.
Application	IHC, WB
Clonality	Polyclonal 5B5
Formulation	0.01% (w/v) Sodium Azide
Storage Instructions	Store vial at -20°C prior to opening. Aliquot contents and freeze at -20°C or below for extended storage. Avoid cycles of freezing and thawing. Centrifuge product if not completely clear after standing at room temperature. This product is stable for several weeks at 4°C as an undiluted liquid. Dilute only prior to immediate use. Expiration date is one (1) year from date of opening. (Ship on dry ice.)
Host	Rabbit
Uniprot ID	P20248

Technical Details

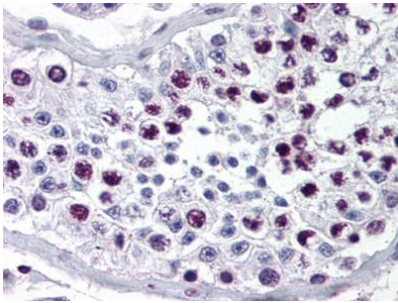
Immunogen	Anti-Cyclin-A Antibody was produced by repeated immunizations with a recombinant protein corresponding to the human cyclin A.
Predicted Reactive Species	Bovine, Canine, Equine, Guinea Pig, Rabbit
Cross Reactivity	No cross reactivity with other proteins.
Isotype	Antiserum
Form	Liquid (sterile filtered)
Concentration	80 mg/mL by Refractometry
Purification	Anti-Cyclin A was prepared from monospecific antiserum by delipidation and defibrination.

	Antiserum will specifically react with a 60 kDa Cyclin A protein from human, rat and mouse tissue. No reaction was observed against other related cyclins. Cross-reactivity with Cyclin A from other species may also occur.
Suggested Dilutions	<p>Dilute the sample so that the expected range of concentrations fall within the detection range of this kit.</p> <p>If the expected range of concentration is unknown, a pilot test should be conducted to decide the optimal dilution ratio for your samples.</p> <p>Some PubMed article(s) citing the expression level of this target are as follows:</p> <p>Boster Bio's internal QC testing used:</p> <p>ELISA: 1:5,000 - 1:20,000</p> <p>IHC: 1:100</p> <p>IP: 1:100</p> <p>WB: 1:500 - 1:5,000</p>

Anti-Cyclin A CCNA2 Antibody (A00700) Images



Western blot analysis of Cyclin A expression in T98G cells treated with normal (n) (lane 1), T98G cells treated with scrambled (scr) (lane 2) and T98G cells treated with PIN1 knockdown (kd1) (lane 3). Cyclin A at 60KD was detected using rabbit anti-Cyclin A polyclonal antibody (Catalog # A00700) at 1:400. The blot was developed using chemiluminescence (ECL) method (Catalog # EK1002).



Cyclin A was detected in paraffin-embedded sections of human testes tissues using rabbit anti-Cyclin A polyclonal antibody (Catalog # A00700) at 1:500. The immunohistochemical section was developed using SABC method (Catalog # SA1022).

3 Publications Citing This Product

1. PubMed ID: 10.1016/j.mce.2019.110697, LncRNA HCP5 promotes cell proliferation and inhibits apoptosis via miR-27a-3p/IGF-1 axis in human granulosa-like tumor cell line KGN
2. PubMed ID: 31974617, Wang S,Zhang C,Zhang X.Downregulation of long non-coding RNA ANRIL promotes proliferation and migration in hypoxic human pulmonary artery smooth muscle cells.Mol Med Rep.2020 Feb;21(2):589-596.doi:10.3892/mmr.2019.10887.Epub 2019 Dec 17.PMID:31974617; PMC
3. PubMed ID: 25918708, Wang C, Ge Q, Chen Z, Hu J, Li F, Song X, Xu H, Ye Z. Biomed Res Int. 2015;2015:304753. Doi: 10.1155/2015/304753. Epub 2015 Mar 30. A New Double Stranded Rna Suppresses Bladder Cancer Development By Upregulating P21 (Waf1/Cip1) Expression.

Visit bosterbio.com/anti-cyclin-a-antibody-a00700-boster.html to see all 3 publications.

Submit a product review to Biocompare.com

Submit a review of this product to Biocompare.com to receive a \$20 Amazon.com giftcard! Your reviews help your fellow scientists make the right decisions. Thank you for your contribution.



Anti-Cyclin A CCNA2 Antibody